

**160/1-3 Beresford Road, Strathfield, NSW 2135**



**Apartment For Rent**

Saturday, 11 May 2024

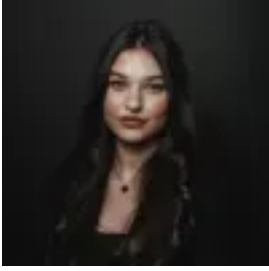
160/1-3 Beresford Road, Strathfield, NSW 2135

**Bedrooms: 2**

**Bathrooms: 2**

**Parkings: 2**

**Type: Apartment**



Elyssa Dabboussi  
0296474303

**\$850 per week**

We invite you to inspect our new rental listing. Property features:-Spacious open plan living and dining area -Queen size bedrooms with built-in wardrobes -Large kitchen with stainless steel appliances and ample storage space-Large balcony perfect for entertaining friends and family-Two secure car spaces and storage cage included Property facts: Preferred lease term: Minimum 6 + months Pets allowed: No Storage available: Yes Parking available: Yes Building and location:-5 min drive to the Strathfield train station-Apart of the Strathfield Girls High School catchment area-10 min drive to Westfield Burwood For further details or to arrange an inspection, please contact Chidiac representative directly. Please ensure you register for upcoming inspections to receive notifications of any inspection changes or cancellations, as well as new listings. Prospective tenants should make their own independent enquiries, including those related to utility and internet service providers as some may have limited availability, and additional connection fees may apply. The information contained within this advertisement is for illustrative/marketing purposes only and does not form part of the lease agreement and should be used as a guide only.