

1604/311 Hume Highway, Liverpool, NSW 2170



Sold Apartment

Monday, 18 March 2024

1604/311 Hume Highway, Liverpool, NSW 2170

Bedrooms: 2

Bathrooms: 2

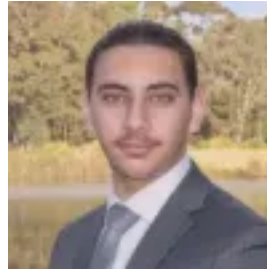
Parkings: 1

Type: Apartment



Allan Sari

0287837700



Omar Sari

0287837700

\$550,000

Welcome to 1604/311 Hume Highway Liverpool, a stunning apartment that offers a luxurious and convenient lifestyle. This modern apartment boasts 2 bedrooms, 2 bathrooms, and an ensuite, providing ample space for comfortable living. With 2 toilets and a garage space, convenience is at your fingertips. Situated in a sought-after apartment building, this property offers a range of features that will impress even the most discerning buyer. The architecture and design of the building create a contemporary and stylish atmosphere, while the high-rise location provides breathtaking city and skyline views.

- Step inside and be greeted by a spacious and well-designed interior. The flooring and interior design exude elegance and sophistication, creating a welcoming and comfortable space to call home.
- Enjoy the best of both worlds with a seamless flow between indoor and outdoor living. The sliding doors open up to a patio and porch area, perfect for relaxing and entertaining guests.
- Offering extensive uninterrupted views with the large, enclosed terrace providing space to soak up the sun and enjoy the fresh air.
- Offering a 101 sqm, this apartment offers plenty of space for your lifestyle needs.
- Strata rates are \$907.15
- Currently tenanted until September 2024 at \$630 per week.

Contact us today to arrange a viewing and experience the luxury and convenience that this apartment has to offer. Disclaimer: The above information has been extracted based on visual inspection by the agent/agents representing Richardson & Wrench Hinchinbrook and by information received from the client's and their legal representative. We have not verified whether that information is accurate, and do not have any belief one way or the other in its accuracy. All interested parties should make and rely upon their own inquiries to determine whether this information is in fact accurate.