

1606/50 Murray Street, Pyrmont, NSW 2009



Sold Apartment

Friday, 3 November 2023

1606/50 Murray Street, Pyrmont, NSW 2009

Bedrooms: 2

Bathrooms: 2

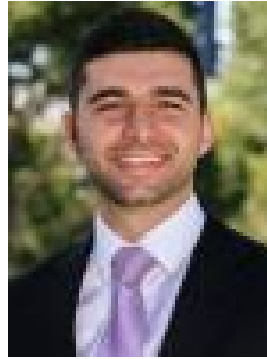
Parkings: 1

Area: 91 m2

Type: Apartment



Tasman Fallshaw
0414990990



Anthony Kannis
0499007711

\$1,575,000

Boasting spectacular views extending to the Blue Mountains, this is a rare offering on the top residential floor of One Darling Harbour, only one level below the five-star swimming pool and facilities. Premium dining awaits in Darling Harbour and Barangaroo. **KEY FEATURES** The layout - Clever orientation ensures living space and both bedrooms receive the full impact of the view, as well as access to a balcony. Deluxe appointments include a granite kitchen, built-in robes, ducted air conditioning and commercial glazing to maximise outlooks over those glorious sunsets. **The facilities** - The building's five-star facilities include 24/7 concierge, swipe security access and hospitality-grade maintenance and cleanliness, as well as the stunning rooftop pool, sauna, spa and gym, plus 360-degree harbour/city views. **The lifestyle** - Darling Harbour is acclaimed world-wide as a vibrant and evolving attraction for locals and visitors alike. Experience thriving waterside restaurants, bars and performance venues, while close to The Star and Crown Barangaroo, Chinatown and CBD shopping precincts. **WHAT YOU NEED TO KNOW** Strata - \$2,135 per quarter Rates - \$512 per quarter Water - \$181 per quarter Area - 91 square metres **AT A GLANCE** - Executive living situated atop this tightly held prestige building - Quality kitchen with granite benchtops and Gaggenau appliances - Two large bedrooms with built-in wardrobes & balcony access - Spacious master includes an ensuite, main bathroom has a bath - Reverse-cycle ducted air con, video intercom & swipe lift access - Building with 24/7 concierge, plus owners' rooftop pool & gym - Friendly building for short-term rentals - Presented in impeccable original condition, potential to update - Secure basement-level designated car space - Stroll to light rail, new Pyrmont Metro & Darling Harbour ferries - Cafes and IGA on the street and only 280m from Coles Pyrmont **Disclaimer:** All information contained herewith, including but not limited to the general property description, price and the address, is provided to City Living by third parties. We have obtained this information from sources we believe to be reliable; however, we cannot guarantee its accuracy. The information contained herewith should not be relied upon and you should make your own enquiries and seek advice in respect of this property.