

16410/177-219 Mitchell Road, Erskineville, NSW 2043



Sold Apartment

Thursday, 19 October 2023

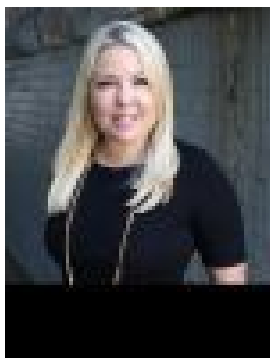
16410/177-219 Mitchell Road, Erskineville, NSW 2043

Bedrooms: 2

Bathrooms: 2

Parkings: 1

Type: Apartment



Melissah McCaffery J P
0408601495

\$1,200,000

Located in the sought after resort style complex 'Sydney Park Village'. This original two bedroom apartment enjoys internal views of the complex facilities and landscaped gardens. Generous open plan living & dining area Original gas kitchen w/ stainless steel appliances Master bedroom w/ BIR & ensuite Entertainers balcony w/ internal outlook Second bedroom w/ built-in robes Original bathroom w/ tub & separate laundry Secure car space & ample visitor parking Sitting on the fringe of Sydney's inner west and inner city, its popular location is 5km from the CBD, 5 minute walk to St Peters station or 10 minute walk to Erskineville station and located directly across from the 2020 Architizer A+ Awards most extensive architecture awards program winner Sydney Park. Highly prized for its relaxed yet vibrant community feel & only moments to the enduring pub culture & buzzing café scene, Sydney Park Village is one of the most sought-after resort style buildings in Sydney. Offering incomparable facilities including 24/7 onsite security guards, 60 visitor car spaces, outdoor pools, tennis courts, basketball court, upgraded gymnasium, indoor heated lap pool, onsite café, onsite building management, beautician, dentist & more – plunge into this urban sanctuary.