

165/1 Mouat Street, Lyneham, ACT 2602

home by holly

Apartment For Sale

Saturday, 24 February 2024

165/1 Mouat Street, Lyneham, ACT 2602

Bedrooms: 2

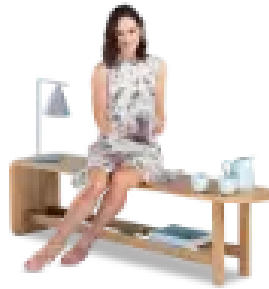
Bathrooms: 1

Parkings: 1

Type: Apartment



Sally Strang + Ash Costello
0491850701



Ash Costello
0491850701

\$499,000+

This contemporary apartment floats you within Canberra's epic blue skies, capturing arresting views across the city to mountains. A soothing neutral palette gives way to pops of vibrant red, as expanses of glass welcome light and skyline. Ideally located and housed in the elegant Axis, this timeless and contemporary, two-bedroom apartment flows to alfresco balcony with epic panoramas. The coveted inner north locale places you within arm's reach of a network of cafes, bars, shops and restaurants. Shared biking and walking trails wend through conservation wetlands, and green spaces, creating the perfect combo of city vibrancy and country peace. Finished to the highest standards, the Axis apartments are famed for their voluminous modern architecture, impressive, sleek curved frontage. A 25-metre indoor pool, large gymnasium and beautifully landscaped barbecue areas, shared gardens, foster a wonderful lifestyle and community. The lobby serves up marble floors, bright blue sculpted pendant, stainless steel lifts, corner library and windows onto the inviting pool. Mt Ainslie, Black Mountain, with Telstra Tower are all silhouetted against an ever-changing backdrop of light, colour and mood. At night the knock-out city views come alive in a sea of twinkling lights. The generous social arena combines living, dining and kitchen and feels both intimate and open, perfect for both relaxed living and entertaining. The kitchen is a chic combo of organic greys, warm timber, and striking lipstick red mosaics. Generous stone benchtops, European laundry and full-height pantry are all seamlessly blended into the elegant, playful scheme. Sleek stainless-steel appliances from Bosch take care of business, making life easy for the home chef. Both bedrooms have storage to keep things soothingly minimal and centre around a sleek bathroom - marble counters, floor to ceiling tiling and those signature notes of red. The master bedroom is privileged by a direct flow to the balcony, welcoming aspect, light and air. The central locale of this coveted inner north suburb gifts an exciting urban lifestyle, connecting you to the independent eateries and bars of O'Connor shops, and the Braddon and Dickson precincts. It is a scenic walk to Lyneham shops and the iconic Tilley's for long brunches and the occasional live Jazz on Saturday evenings and The Front for great coffee. The light rail is at your doorstep whisking you easily to the CBD and the metro city station connecting you to the whole of Canberra. Ample green spaces, shared bike and walking paths, wetlands, and established street trees create a tranquil village experience in the heart of the metropolis. features..stylish and generously proportioned two-bedroom apartment in the secure Axis apartment complex. panoramic views across Canberra and out to mountain ranges. light filled and airy with high ceilings. open plan living, dining, kitchen flowing to balcony. bedroom one, with wall of mirrored robes, opens to balcony and views . bedroom two with built-in robe. gorgeous bathroom with marble counter tops and floor to ceiling tiling. modern kitchen with ample cabinetry plus full-height double pantry, stone benchtops, stainless steel appliances from Bosch, including wall oven, integrated rangehood and dishwasher . European laundry. reverse cycle electric heating and cooling. intercom access. 25 metre indoor pool, gym and shared barbecue areas. secure basement car parking and storage. short walk to the Dickson and Braddon precincts. leafy stroll to Lyneham shops and café's . close to parks, ovals and wetlands. a few steps from Lyneham High School . close to transport including the light rail whisking you straight to the CBD. eer 6. living size 78m2 . balcony size 8m2. body corp \$1,651.75 per quarter (admin + sinking)