

169 Hargreaves Avenue, Chelmer, Qld 4068



House For Sale

Friday, 3 November 2023

169 Hargreaves Avenue, Chelmer, Qld 4068

Bedrooms: 3

Bathrooms: 4

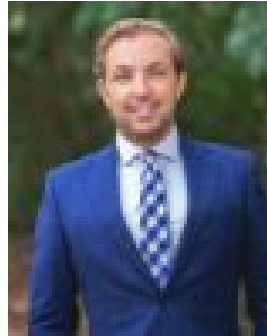
Parkings: 4

Area: 602 m2

Type: House



Douglas May
0410488110



Lachlan Humble
0438688347

Auction

ONLINE AUCTION 5.00pm Wednesday 22nd November 2023 Go To:

<https://www.youtube.com/@raywhitesherwoodgraceville4659/streams> A residence of distinction, elegance and timeless beauty, this impeccable abode presents a prestigious address in riverside Chelmer, neighbouring picturesque parkland and the waterfront. Resonant with charm and sprawling proportions, the home rests on a 602sqm parcel behind a 38.7m frontage of manicured hedges and wrought iron gates. Showcasing exquisite street appeal with a triple gabled façade and a wide verandah framing the entranceway, the period allure creates a sense of sophistication that continues across the interiors, displaying magnificent herringbone tiles and polished timber floors, plantation shutters, pendant lights and a bright white aesthetic. You are invited to experience the relaxing ambience and warming atmosphere in the free-flowing living and dining area that spans the upper floor. Featuring a cosy fireplace and extending effortlessly to the open-plan kitchen and enclosed rear deck, this space forms a feeling of connectedness, perfect when cooking, dining and entertaining. When you want to bask in the river breezes, step out to the front verandah or descend to the peaceful sitting area below, nestled amongst the lush lawns, landscaping and arbours, exuding privacy and romance. A second living space resides downstairs with a cellar and bi-fold doors opening directly to the swimming pool and alfresco patio, creating a blissful indoor/outdoor retreat. Four bedrooms, four bathrooms, a laundry and a double garage finalise the floor plan. All the bedrooms feature upstairs, including the master, hidden in a private wing with a lavish walk-in robe and ensuite. Providing comfort and energy efficiency, the home features ducted and split system air-conditioning, ceiling fans, a water tank and an 8kW solar system. Gracing the leafy streets of blue-chip Chelmer, buyers will love the idyllic lifestyle. Riverfront walking paths and picturesque parkland are only steps from your door, and you can access popular cafes, restaurants and Chelmer station with ease. A short walk to childcare, Graceville State School and Christ the King Primary School, and only moments from renowned high schools and Indooroopilly Shopping Centre - an esteemed lifestyle awaits. **DISCLAIMER:** Whilst all care has been taken to ensure that the information provided herein is correct, we do not take responsibility for any inaccuracies. Accordingly, we recommend that all interested parties should make their own enquiries and due diligence to verify the information. Any personal information provided to Cameron Crouch Property T/As Ray White Sherwood, will come under the terms set out in our Privacy Policy, which can be found here for your convenience: <https://www.raywhite.com/privacy>.