

16A Eloura Avenue, Brighton East, Vic 3187

WHITEFOX

Townhouse For Sale

Monday, 27 November 2023

16A Eloura Avenue, Brighton East, Vic 3187

Bedrooms: 4

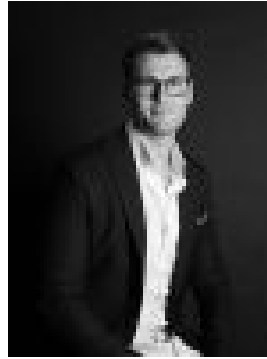
Bathrooms: 3

Parkings: 2

Type: Townhouse



Lana Samuels



Michael Martin
0478011216

THE DEAL: \$1.95M - \$2.145M

OBVIOUS Brand-new and stunning with its breathtaking proportions and understated luxury, this exceptional four-bedroom plus study, north-facing home is the epitome of new-age contemporary living. The striking exterior exudes a bold and engaging presence, while the well-planned interior, complete with luxurious appointments and superb designer finishes is guaranteed to exceed your expectations. Stepping inside, wide engineered timber floors flow seamlessly from the entry past a beautifully appointed downstairs guest (optional main) bedroom with walk-in robe and luxe ensuite, and through to the epicentre of the home. An expansive and light-saturated living/dining domain effortlessly transitions outdoors through twin sets of stacked sliding doors, offering a sun-drenched and entirely private setting for entertaining on the broad deck amongst low-maintenance irrigated landscaping. Complementing the entertainer's aspect is the crisp clean lines of the gourmet stone kitchen, enticing with a suite of high-end Miele appliances, a waterfall-edge central island and plenty of soft-close storage. Uncompromising space continues upstairs, where a spacious living zone separates a stylish main wing with an indulgent twin vanity ensuite and custom-built walk-in robe from two additional generously robed bedrooms and an on-trend bathroom with a freestanding bath. Flawlessly finished with feature marble tiles, ultra-high ceilings, double glazing and dual zoned reverse-cycle heating/cooling, this incredible home also includes a large laundry with storage, a single auto garage, alarm, a stylish powder room and a dedicated study with front garden access. SEALS THE DEAL Here, you're not just purchasing a home; you're acquiring an unparalleled lifestyle, offering a seamless blend of luxury finishes, innovative design and prime location within walking distance to Centre Road's vibrant shopping strip, walking trails, leafy parks and elite schools, including Brighton Secondary College and Gardenvale Primary.