

16A Melbourne Street, Concord, NSW 2137

DibChidiac®

Duplex/Semi-detached For Sale

Monday, 3 June 2024

16A Melbourne Street, Concord, NSW 2137

Bedrooms: 4

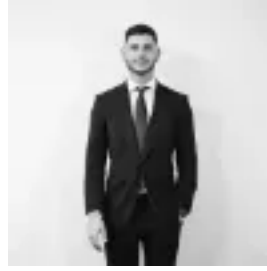
Bathrooms: 2

Parkings: 2

Type: Duplex/Semi-detached



Dib Chidiac
0291366472



Alex Cummins
0291366472

Forthcoming auction

Premium family living finds a new address in peaceful community-focussed surroundings in a highly convenient Concord pocket. This exclusive double brick architect-designed residence delivers a luxurious contemporary approach to easily managed living and entertaining, while serving up space and style like few others in the area. It's the perfect readymade retreat for a large and growing family, and a sought-after street setting adds the final touch, as it's conveniently located close to the train station at North Strathfield, Majors Bay Road shops and all the area's quality schools. - An exceptional street presence with a captivating modern façade - Impressive proportions with a focus on quality, space and natural light - Sleek and contemporary interiors feature a generous open plan layout - Level flow to a dining patio with full outdoor kitchen, plus a grassed garden - A deluxe island kitchen with high-end SMEG appliances and stone benchtops - Four upper-level bedrooms are all fitted with generous custom built-ins - The king-sized master features a designer ensuite and private balcony - Automatic double garage with internal access plus a driveway car space - Ducted air-conditioning, alarm security and premium inclusions throughout - Quick and convenient access to the M4 motorway for an easy CBD commute