

**16B Eloura Avenue, Brighton East, Vic 3187**

**WHITEFOX**

**Sold Townhouse**

Thursday, 14 December 2023

16B Eloura Avenue, Brighton East, Vic 3187

**Bedrooms: 4**

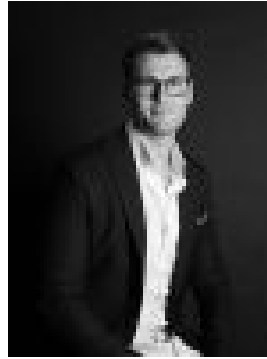
**Bathrooms: 3**

**Parkings: 2**

**Type: Townhouse**



Lana Samuels



Michael Martin  
0478011216

## Contact agent

OBVIOUS Brand-new and stunning with its breathtaking proportions and understated luxury, this exceptional four-bedroom plus study home is the epitome of new-age contemporary living. The striking exterior exudes a bold and engaging presence, while the well-planned interior, complete with luxurious appointments and superb designer finishes is guaranteed to exceed your expectations. Stepping inside, wide engineered timber floors flow seamlessly from the entry past a beautifully appointed downstairs guest (optional main) bedroom with walk-in robe and luxe ensuite, and through to the epicentre of the home. An expansive and light-saturated living/dining domain effortlessly transitions outdoors through twin sets of stacked sliding doors, offering a sun-drenched and entirely private setting for entertaining on the broad deck amongst low-maintenance irrigated landscaping. Complementing the entertainer's aspect is the crisp clean lines of the gourmet stone kitchen, enticing with a suite of high-end Miele appliances, a waterfall-edge central island and plenty of soft-close storage. Uncompromising space continues upstairs, where a spacious living zone separates a stylish main wing with an indulgent twin vanity ensuite and custom-built walk-in robe from two additional generously robed bedrooms and an on-trend bathroom with a freestanding bath. Flawlessly finished with feature marble tiles, ultra-high ceilings, double glazing and dual zoned reverse-cycle heating/cooling, this incredible home also includes a large laundry with storage, a single auto garage, alarm, a stylish powder room and a dedicated study with front garden access. SEALS THE DEAL Here, you're not just purchasing a home; you're acquiring an unparalleled lifestyle, offering a seamless blend of luxury finishes, innovative design and prime location within walking distance to Centre Road's vibrant shopping strip, walking trails, leafy parks and elite schools, including Brighton Secondary College and Gardenvale Primary.