

16b San Remo Avenue, Gymea, NSW 2227



Sold Duplex/Semi-detached

Thursday, 14 December 2023

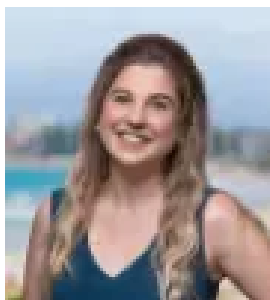
16b San Remo Avenue, Gymea, NSW 2227

Bedrooms: 5

Bathrooms: 3

Parkings: 1

Type: Duplex/Semi-detached



Briolynn Kennedy
0295239422

Contact agent

Experience the allure of stunning curved architecture, premium on trend finishes and meticulous craftsmanship. Renowned interior designer Rochelle Halatau has worked closely with Emmanuel Building Group ensuring every corner of this luxury full brick residence exudes style, space and functionality. Located in a peaceful, family-friendly neighbourhood in a quiet popular street, the property is situated just moments from Gymea shopping village, local schools, and transportation hubs, offering unparalleled convenience for modern living and sophistication. - Full brick residence, constructed with meticulous attention to detail - Exceptional high-end finishes featuring light coastal colour tones - Flexible layout including ground floor bedroom or home office - Open-plan living & dining, high ceilings with skylight plus electric fireplace - Stunning designer kitchen with breakfast bar, gas cooking and dishwasher - Gorgeous timber flooring, ducted a/c, video intercom, CCTV - Covered alfresco entertaining with built-in kitchenette and sunny east aspect - Single lock-up garage plus ample storage options throughout *** Property photos and video are of next door at 16a San Remo Avenue, Gymea. Photos have been reversed to represent the current layout.