

16c Kalang Road, Dora Creek, NSW 2264



Residential Land For Sale

Saturday, 4 May 2024

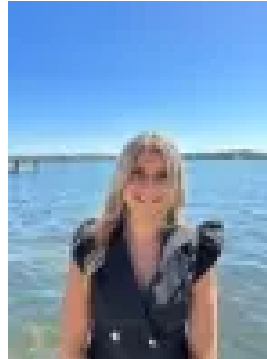
16c Kalang Road, Dora Creek, NSW 2264

Area: 965 m2

Type: Residential Land



Kristy McCabe
0249596577



Sarah Dutch
0249596577

\$595,000

Choose the perfect design & build your perfect home to stand tall on this impressive block - making sure to take in as much of the view and location as possible. Positioned beautifully at the end of a cul-de-sac and direct access to waterfront reserve ideal for those that love a morning paddle, fishing etc. Within minutes to 3 shopping villages, 2 train stations both public & private schools and Avondale University. Stunning elevated 965m² block offering a stunning view over the winding & ever inviting Dora Creek - A beautiful healthy water way * Build your dream home taking in the huge advantages such a block holds * Access to the creek and the waterfront reserve only meters away * Its a lifestyle on offer - not just a vacant block* Approximately 1.6km to Dora Ck Shopping Village, Train Station, Workers Club, Primary School and sporting fields* Within 4km to Cooranbong Shopping Village & Avondale Schools* Approximately 5.4km to Avondale University* 5.8km to Morisset Town Centre & Train Station* Call to meet onsite or for more information today. From all of us at Ray White Toronto - Warners Bay - Wangi Wangi - North Lake Macquarie, we wish you every success in the search for your next property. If you would like more detail on this or to chat about one of the many other properties we have available please call or email us today..DISCLAIMER: We have in preparing this document used our best endeavours to ensure the information contained is true and accurate, but accept no responsibility and disclaim all liability in respect to any errors, omissions, inaccuracies or misstatements contained. Prospective purchasers should make their own enquiries to verify the information contained in this document