

**17/2 Bortfield Drive, Chiswick, NSW 2046**

**CobdenHayson.**

**Apartment For Sale**

Friday, 14 June 2024

17/2 Bortfield Drive, Chiswick, NSW 2046

**Bedrooms: 2**

**Bathrooms: 1**

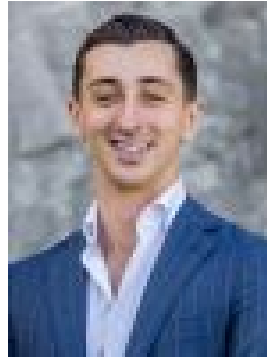
**Parkings: 1**

**Area: 107 m2**

**Type: Apartment**



Alexander Trovato  
0416557515



Adrian Gough  
0400576610

## Contact Agent

Perched majestically atop the Peninsula and offering expansive land and gardens, this rare gem exudes timeless allure. Spectacular water views stretch gracefully down the river to Homebush Bay and beyond, creating an enchanting vista, particularly captivating as colours dance on the water's surface at night. Boasting arguably the best scenic location in Chiswick, each of the four apartments per level features glass-fronted living spaces opening onto balconies that showcase panoramic water views. The king-sized main bedrooms further enhance the appeal, capturing the stunning vistas. Abundant sunlight and exceptional airflow throughout the property ensure comfort and tranquility.- Generous bedrooms with wall-to-wall and floor-to-ceiling built-in wardrobes.- Tidy original kitchen and separate internal laundry.- Beautifully renovated bathroom in travertine, complete with a bidet.- Ample internal storage, including cupboards and linen spaces, with additional downstairs storage.- Fresh paint and carpeting, complemented by reverse cycle air conditioning.- Dedicated undercover carport space for convenience.- Private swimming pool with spa for relaxation and leisure.- Proximity to Chiswick Wharf, offering an extensive city transit timetable just approximately 100 meters away.- Immediate access to a bus stop, shops, restaurants, and cafes.- Directly opposite a delightful park, providing green space and recreational opportunities.