

17/280 Bronte Road, Waverley, NSW 2024

PPD REAL ESTATE

Sold Apartment

Friday, 19 January 2024

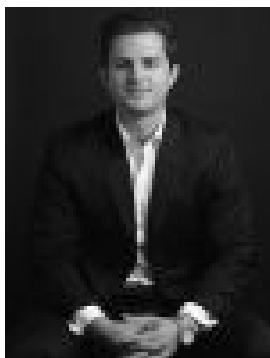
17/280 Bronte Road, Waverley, NSW 2024

Bedrooms: 2

Bathrooms: 2

Parkings: 1

Type: Apartment



Tristan Oddi

0433110168

\$1,100,000

In the heart of Charing Cross village, this spacious apartment is on the top level of an attractive boutique complex set well back from the street behind lush landscaped gardens. Filled with natural light, it has a large main bedroom with ensuite, integrated granite kitchen, open-plan living-dining area, north/west balcony and internal laundry. Private and quiet, the apartment has shops, cafes, restaurants and buses at its doorstep, while its minutes from Queens Park, beaches and Bondi Junction shopping and transport.- Boutique security complex - Entrance hall with polished timber flooring- Light-filled living and dining area, opening to private balcony- Open plan, integrated gas kitchen with dishwasher- Large main loft bedroom with walk in robe and ensuite- Second bedroom or ideal home office - Sleek main bathroom with bath and shower- Internal laundry; security intercom- Polished timber floors, north facing living - Lift access to secure basement parking