

**17 Chiswick Street, Officer, VIC, 3809**

**UNLOCK**

**Sold House**

Friday, 12 May 2023

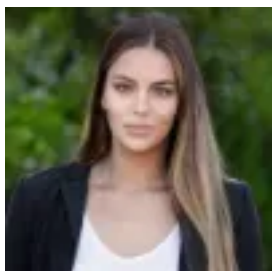
17 Chiswick Street, Officer, VIC, 3809

**Bedrooms: 4**

**Bathrooms: 2**

**Parkings: 2**

**Type: House**



Natascha Verkaik  
0356551531



Rachael Woodham  
0356551531

## **Sitting pretty in the Timbertop Estate!**

Prime Timbertop living is now here!

Located in Officer's premier Timbertop estate, this delightful single-story home is ideally located close to Timbertop Primary School, St Brigid's Catholic Primary School, Hicks Reserve Playground and just a short drive to shopping facilities, transport and amenities.

This near new immaculate home is elegantly designed with contemporary aesthetics, perfect to suit all families or a smart investor looking for a good investment.

Built 6 years ago by SJD Homes, from the moment you step down the landscaped timber deck to the front door and right through the home, the quality customised details really speaks for itself.

The floor plan is versatile and designed for the growing family with high ceilings, entrance & kitchen pendant lights with neural calming colours throughout.

This wonderful home embraces multiple living areas with a theater room, open plan main living, dining and connected kitchen space, plus an additional 3rd living / enclosed alfresco area which is drenched in beautiful light and garden views.

The kitchen is refreshingly bright with natural sunlight and offers a large walk-in pantry, 900mm freestanding gas cooktop & oven, dishwasher, 20mm stone benchtops with breakfast bar, feature tiled splashback and overhead cupboards.

This welcoming open plan kitchen, dining, living and enclosed alfresco space is the heart of the home and is incredibly spacious which makes entertaining family and friends a dream

The master bedroom is substantial in size with a huge walk-in robe, a well sized ensuite with stone benchtops, double vanity, toilet and large shower.

The three additional bedrooms are also oversized and all offer sliding door built-in robes, complemented by the main family bathroom.

Located in Officer's most sought-after location, this Timbertop home is only a short walk or drive to Orchard Park Primary School, St Brigids Primary School, D'Angelo Winery, Officer shopping complex, cafés, restaurants and so much more!

Just some of the elegant property features:

- Fully landscaped gardens including front & rear deck.
- Three large bedrooms with built-in-ropes.
- Master with en-suite and walk-in robe.
- Theatre room.
- Enclosed Alfresco / Living room.
- Open plan Living / Dining zone.
- Ducted Vacuum.
- Ducted Heating, Cooling, gas coonara fireplace and ceiling fans.
- Modern kitchen with 20mm stone benchtops, large Walk-in-Pantry & dishwasher.
- Downlights and feature pendant lighting throughout the home.
- Two and a half car garage with remote control access and rear roller door access.
- Generous backyard with rear timber decking, feature lighting, veggie garden and camellia feature trees.

Don't delay in calling for more information and we look forward to seeing you at the next open for inspection!