

17 Cluney Court, Blackburn South, Vic 3130



House For Sale

Wednesday, 8 May 2024

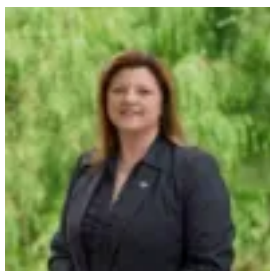
17 Cluney Court, Blackburn South, Vic 3130

Bedrooms: 4

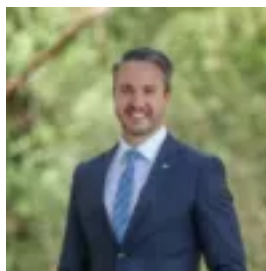
Bathrooms: 2

Parkings: 3

Type: House



Sharyn de Vries
0398706211



Joseph Corsi
0398706211

\$1,300,000 - \$1,400,000

Brimming with character and comfort, this brilliant white weatherboard gem delivers distinct charm and light-soaked space that every family craves. Well set back in established gardens with a signature liquid amber tree providing both shade and a delightful aspect from the inside. The sun filled interiors celebrate the home's history with timber panelled walls, casement windows, bespoke fitted seating and wall sconces. A mudroom entry with cloak cupboard is a nice prelude to the cracking firelit lounge. Kitchen/meals is both a charming and practical space to dine with parquetry floors, timber benchtops and two-way custom made cabinetry. Fitted with a Westinghouse oven and electric cooktop for your cooking needs. Connecting with a generous family room with built-in chez lounge. The home branches off to three bedrooms with high ceilings that feature throughout the home (2 x BIR, 1 x WIR) plus a tidy bathroom with separate toilet amenity near the laundry. Stairs lead to possibly the most favourite room in the home for the adults. The whole level is dedicated to a huge master retreat, walk-in robe and ensuite with elevated rear-facing aspect. Enjoy the company of family and friends in your sizeable garden, appreciating the birdlife attracted by the lush and leafy surrounds. Capitalise further on this space by building a front fence for added privacy. A large twin carport doubles as a terrific covered entertaining space with direct access from the lounge, adjoining a single carport ideal for storing a caravan/boat. Extra features include: floor to ceiling hall storage, an outdoor shed, water tank, fruits trees and external window blinds. An attractive home for professionals, a family and those with a keen interest in preserving character while adding modern influences. Merely minutes on foot to St Luke's Catholic School, Edinburgh Patch and playground and the wide open spaces, trails and wetlands of Orchard Grove Reserve, and Mirrabooka Reserve. On the cusp of Box Hill and a short distance to Box Hill Golf Club and Gardener's Creek Trail, Deakin University and Presbyterian Ladies College. Burwood One and Burwood Heights plus Forest Hill Chase shopping complexes cater for all your needs, just a few kilometres further to Box Hill Central and Wattle Park. Great access to buses, trams, trains and the freeway. You do not want to miss out on this wonderful home and the chance to make it yours! Disclaimer: The information contained herein has been supplied to us and is to be used as a guide only. No information in this report is to be relied on for financial or legal purposes. Although every care has been taken in the preparation of the above information, we stress that particulars herein are for information only and do not constitute representation by the Owners or Agent.