

17 Eleanor Drive, Silvan, Vic 3795



House For Sale

Thursday, 4 April 2024

17 Eleanor Drive, Silvan, Vic 3795

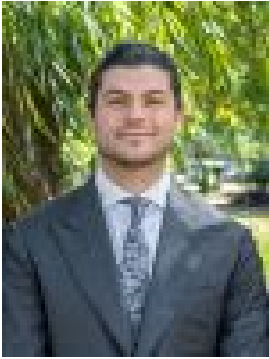
Bedrooms: 7

Bathrooms: 3

Parkings: 2

Area: 9 m2

Type: House



Rene Mawad
0403141596



Cat Schwind
0401011314

Auction (\$1,800,000 - \$1,980,000)

THE PROPERTY Nestled in the lush, leafy hills on a massive 9-hectare property, this exceptionally spacious residence offers a unique opportunity to secure a dream lifestyle in a sought-after rural locale. Designed with flexible living in mind, this expansive retreat features two separate houses under one roof, ideal for harmonious multigenerational living. Flaunting four bedrooms and one bathroom, the main house offers an array of possibilities and versatile spaces, including a massive open plan living and dining area highlighted by timber features and built-in bar. Centrally located, the chic kitchen boasts an island bench and heaps of storage including a walk-in pantry, while the main bedroom has an adjoining sitting room which adds to the appeal. Enjoying the convenience of a separate entrance, the second portion of the home offers three bedrooms and two bathrooms, as well as a huge living area with sliding doors leading outside and an adjoining dining area, along with a formal lounge with fireplace, second kitchen with walk-in pantry, and an abundance of storage throughout. Outside, the covered verandah overlooks the tranquil and secluded backyard and luxurious in-ground pool, with regular visits from the resident wildlife adding to the serenity.

THE FEATURES

- Substantial seven-bedroom, three-bathroom family home
- Lifestyle property on 9 hectares ideal for multigenerational living
- Two separate residences under one roof offers valuable flexibility
- Spacious living zones backdropped by serene leafy outlooks
- Covered verandah overlooks vast backyard with in-ground pool
- Double carport & storage area, plus abundant internal storage
- Unique opportunity to secure a lifestyle property in coveted locale
- Cellar storage
- Sheds

THE LOCATION Set in the lush hills of the Yarra Ranges, this enticing property is secluded and private, yet only a short drive to shops, cafés and schools in town, offering a unique opportunity to secure a rural lifestyle that is within easy reach of everything you need.

On Site Auction Saturday 27th of April at 2:30pm