

17 Elpis Road, Weir Views, Vic 3338



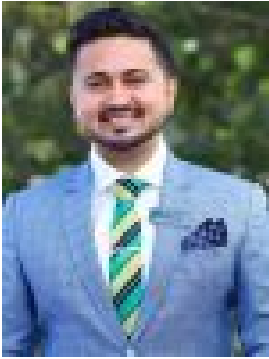
Sold Residential Land

Tuesday, 26 March 2024

17 Elpis Road, Weir Views, Vic 3338

Area: 400 m2

Type: Residential Land



Shubham Rana
0424070420



Mansi Ray
0410422222

\$340,000

Reliance Real Estate is proud to present you opportunity to secure yourself a prime piece of land to build your dream home in a sort after location of Weir views just opposite Opalia Shopping Centre. On offer is a wonderful 400 sqm (approx.) block of vacant land, ready to accommodate the home of your dreams (STCA). Most surrounding blocks have already built their houses-putting you in the unique position to stand out from the crowd with your designer-built home. Weir Views, in what is fast becoming the most sought-after location in Melton, has seen a 30% population increase since 2016. On offer are great shopping facilities surrounding you including Woodgrove Shopping Centre, Opalia Plaza, and great primary schools and secondary colleges. It's just 32km west of the CBD, with Victoria University and Melton Train Station also just a short drive away. All data points to this area being a future investment goldmine! It's an opportunity simply too good to miss. Please Contact Shubham Rana on 0410 424 070 420 or shubham@reliancere.com.au for more information DISCLAIMER: All stated dimensions are approximate only. Particulars given are for general information only and do not constitute any representation on the part of the vendor or agent *Images for illustrative purposes only*