

17 Gloucester Drive, Deebing Heights, Qld 4306

STRUD

House For Sale

Friday, 24 May 2024

17 Gloucester Drive, Deebing Heights, Qld 4306

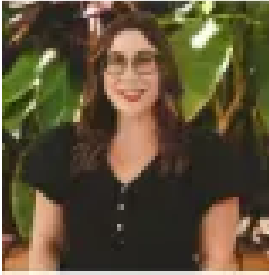
Bedrooms: 4

Bathrooms: 2

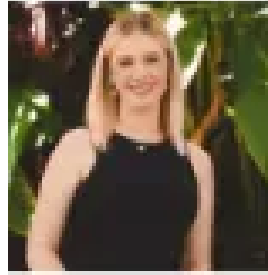
Parkings: 5

Area: 2540 m2

Type: House



Bliss Grayson
0421416793



Tiffany Jamieson
0405091023

FOR SALE

Nestled within the exclusive Paradise Heights Estate in Deebing Heights, this prestigious property is a testament to luxury living in a serene suburban setting. With four bedrooms, two bathrooms, and situated on an expansive 2540m² block, this residence embodies opulence and sophistication. This Plantation homes built home is a seamless fusion of modern design and functional elegance. From the moment you step through the front door, you are greeted by spacious interiors bathed in natural light, creating an inviting atmosphere. The four well-appointed bedrooms offer not only ample accommodation but also serve as private retreats, ensuring comfort and tranquility for every member of the household. The property's exterior is a haven of leisure and entertainment. An expansive entertainment area beckons, providing the perfect setting for social gatherings or quiet moments of relaxation. Whether hosting guests or enjoying a peaceful evening under the stars, this space is designed to enhance the overall living experience. A standout feature of this property is the sizeable land. This versatile space opens up a realm of possibilities, from adding your dream pool or shed to creating the ultimate garden for those green thumbs. The purpose built shed offers ample accommodation for generously sized caravans or boats and the inclusions of water tanks and solar system are appreciated. The Paradise Heights Estate in Deebing Heights provides a prestigious backdrop for this residence, ensuring a sense of community and exclusivity. With its well-designed interiors, expansive block, and entertainment area, this property is not just a house; it's a luxurious retreat that caters to the desires of those seeking an elevated living experience.

Extra Features: - 6.5kw solar system - Gas Point in Media room - Gas fire Place - Gas Hot Water and cooktop - convention oven - App run security system - Bidet ensuite - Plumbed in fridge - Extra height ceilings - Bolt to garage - Powered shed

Nearby locations: • Ideally located on a quiet street in the prestigious Paradise Heights Estate, surrounded by other quality homes • Conveniently located a short drive to Centenary Highway • Only a 42 minute commute to Brisbane, CBD • Located close to local schools, shopping centres, and sporting facilities

Disclaimer: STRUD Property has taken all reasonable steps to ensure that the information contained in this advertisement is true and correct but accept no responsibility and disclaim all liability in respect to any errors, omissions, inaccuracies or misstatements contained. Prospective purchasers should make their own enquiries to verify the information contained in this advertisement.