

17 Greenway Street, Churchill, Qld 4305



House For Sale

Friday, 14 June 2024

17 Greenway Street, Churchill, Qld 4305

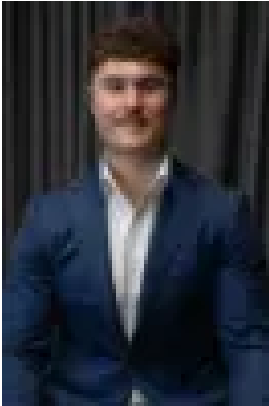
Bedrooms: 4

Bathrooms: 3

Parkings: 2

Area: 630 m2

Type: House



Charles Kimmorley
0477652889



Andrew Debattista
0422896945

Offers Over \$649,000

Nestled in the serene suburb of Churchill, this stunning four bedroom, three bathroom residence on Greenway Street offers a perfect blend of comfort and convenience. The spacious layout is ideal for growing families, with ample room for everyone to enjoy their own space. The home features an open plan living and dining area, a modern kitchen equipped with the latest appliances, and a master suite that acts as a private retreat. The property has been freshly renovated internally, showcasing timber-look flooring paired with new carpets in the bedrooms. This home is packed with premium features including a 5kW solar system, split system air conditioning in the living room, LED downlights on the upper level, and multiple storage rooms including pull-down stairs to attic storage space. The large outdoor entertaining deck is perfect for gatherings and relaxation, complete with an outdoor spa to unwind after a long day. The media room comes with a bar area, making it ideal for entertaining guests. The double lock-up garage with electric roller doors offers secure parking for two cars, complimented by front and rear security doors for added peace of mind. The large garden sheds provide additional storage space for all your outdoor needs. The home has been rent appraised at \$650 per week. You can just move in yourself and take advantage of the size, quality and features that this amazing family home offers or you can immediately rent it out to some very lucky tenants. This house is perfect for anyone wanting a quality home in a quality area. You must inspect this amazing family home before it is gone! The home is located in much sought after Churchill so you have quick and easy access to highways to Brisbane and Toowoomba as well as walking distance to Churchill Primary School, Bremer State High School and approximately 15 mins to RAAF base Amberley and 10 mins to Ipswich CBD. Neighboring the suburb of Yamanto, you're only 10 minutes away from the brand new Yamanto Central Shopping Complex featuring every specialty store you'll ever need. Listing agents: Charles Kimmorley & Andrew Debattista Don't be disappointed, call me now - I'm waiting for your call. NGU Real Estate Ripley - The Kimmorley Group Results Speak Louder Than Words