

**17 Hoff Street, Mount Gravatt East, Qld 4122**

**Residential Land For Sale**

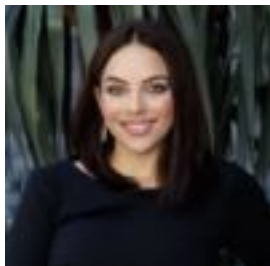
Wednesday, 24 April 2024



17 Hoff Street, Mount Gravatt East, Qld 4122

Area: 405 m2

Type: Residential Land



Angela Steven



Mitch Schenning

0407901342

## By Negotiation

Unlock Your Vision Introducing 17 Hoff Street and 19 Hoff Street, Mount Gravatt East - your exclusive invitation to craft the home of your dreams and embrace a lifestyle without compromise. With two generous 405 sqm blocks available, you can take your pick if you act quickly. Each awaits your vision, offering the canvas for you to design a contemporary sanctuary of unparalleled luxury. Nestled in the heart of Mount Gravatt East's coveted enclave, Hoff Street boasts a prestigious setting where other modern homes have been constructed, and a truly special street is emerging. Now you can seize the opportunity to join this esteemed community by creating your own bespoke residence in this prime location. Beyond the promise of ample space, immerse yourself in the scenic beauty of suburban views and the convenience of a family-friendly environment. From shopping centres to dining destinations, public transport to educational facilities, every amenity is within arm's reach. To top it off, you'll no doubt enjoy seamless connectivity to the city and the Pacific Motorway, ensuring effortless commutes and endless adventures. As Mount Gravatt East thrives as a growth suburb, these blocks on Hoff Street are poised to captivate discerning buyers and sell swiftly. Don't miss your chance to secure this prestigious address and embark on a journey of unparalleled living.

**Location Convenience** This appealing property sits in the heart of Mount Gravatt East, giving you convenient access to a wide range of amenities straight from your front doorstep. Situated in a family-friendly neighbourhood, you're within the school catchment zones of Mount Gravatt East State School and Mount Gravatt State High School, making it ideal for families at all life stages - Griffith University and TAFE are also just a short car trip. For your daily needs, Mount Gravatt Plaza is a mere stone's throw with an array of shops, including a fruiterer, bakery, fishmonger, butcher, Coles and Woolworths. The Westfield mega-centres of Garden City and Carindale are also nearby, as is the handy Homemaker Centre, offering specialty stores like Spotlight, Sheridan, Bunnings, JB Hi-Fi and more. A thriving local cafe and restaurant scene is just around the corner for the social foodies, providing a virtual menu of quality bar and dining options. Outdoor enthusiasts will appreciate the proximity to Whites Hill Reserve, Toohey Forest and Mount Gravatt Outlook Reserve, all green havens to disconnect from urban life and reconnect with nature. Daily commuting is a breeze with public transport close at hand and effortless access to the Pacific and Gateway Motorways, Logan Road and Cavendish Road - the Brisbane CBD is a mere 9 kilometres away (direct line).

**Fast Facts** • A rare chance to own land in the thriving Mount Gravatt East area • Two cleared and elevated 405sqm blocks ready for your dream build • Both blocks are already connected to water and sewerage services • Conveniently located near the CBD, major motorways, primary and secondary schools, major shopping centres, lifestyle precincts, nature reserves and the Mount Gravatt Showgrounds

**Disclaimer:** Any estimates on this page are not provided by the Agency or Agent and are not a price guide. Whilst every care has been taken to ensure the accuracy of the information contained herein, all information about the property has been provided to Ray White Stones Corner by third parties. Ray White Stones Corner does not warrant the information's accuracy or completeness and accepts no responsibility or liability in respect of any errors, omissions, inaccuracies, or misrepresentations that may occur. Parties should make and rely on their own enquiries in relation to all aspects of the property including but not limited to the information contained herein.