

17 Jopejija Crescent, Culburra Beach, NSW 2540



Sold House

Wednesday, 29 November 2023

17 Jopejija Crescent, Culburra Beach, NSW 2540

Bedrooms: 3

Bathrooms: 2

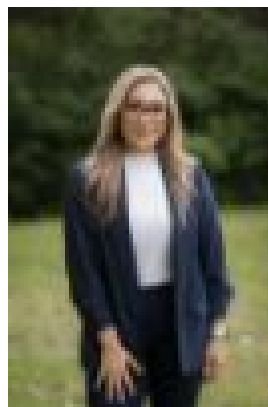
Parkings: 1

Area: 1201 m2

Type: House



Julie Gauci



Angela Henry
0411481841

\$985,000

Situated on a well-maintained and generous 1201 sqm block - this massive double level property is the ideal home for a large family, featuring a convenient versatile layout with open plan living and dining spaces and plentiful storage options. There is room for everyone and everything! Nestled in a quiet cul-de-sac in the heart of Culburra Beach and within easy walking distance of the beach and lake foreshore - you will find this immaculately presented 3-bedroom family home. This lovely two storey dwelling is perfect for the entertainer of the family as it includes a spacious rumpus room with two outdoor entertainment areas. It has a sizeable fenced front and backyard, offering peace and tranquility with plenty of space for the kids and pets. The home has a large upstairs entertaining deck, facing north-east with beach glimpses, which is ideal for those lazy afternoons lounging in the sun. In addition there are two other outdoor decks, ensuring you always have the perfect spot to relax with a good book. The sea breezes, peaceful sounds of crashing waves and views all the way across to the Cambewarra escarpment and the Gerroa headland complete the picture. • Fireplace • Ceiling fan • Modern kitchen • Bright & spacious open plan layout • Built in robes in all three bedrooms • Extra long driveway • Single lock up drive through garage • Large level backyard holds potential for a second dwelling! Culburra Beach offers access to facilities such as Woolworths, the local Bowling Club, cafes, restaurants and more. All within approximately 2kms. Where else would you want to find yourself? We cannot wait to show you through this property and all it has to offer. Contact Ray White Culburra for further information and inspection times - 4447 3169.