

17 Lord Eldon Drive, Harrington Park, NSW 2567

Sold House

Wednesday, 3 April 2024



17 Lord Eldon Drive, Harrington Park, NSW 2567

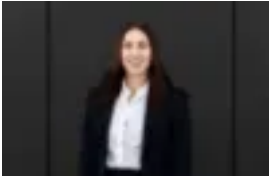
Bedrooms: 4

Bathrooms: 2

Parkings: 2

Area: 576 m2

Type: House



Ashleigh Maiava
0491175637

\$1,210,000

Step into luxury living with this magnificent four bedroom family home nestled in a sought-after street in Harrington Park. Boasting an expansive 576sqm block, this property offers the perfect blend of space, location and opportunity. As you enter, you'll be greeted by a grand formal lounge room, dining area, and home office, setting the tone for elegant entertaining and functionality. The heart of the home features a spacious family room seamlessly connected to the kitchen, complemented by a separate rumpus room for added versatility. The multiple living areas will perfectly accommodate a family with kids. The generously sized bedrooms all come equipped with built-in robes, while the luxurious master suite boasts a private ensuite, walk-in robe, and balcony, ensuring a retreat-like experience. Parking is a breeze with a double garage offering internal access, while outdoor entertaining is elevated with an undercover area overlooking landscaped gardens and a built-in BBQ – perfect for hosting gatherings or simply unwinding in style. Don't miss this opportunity to elevate your lifestyle in Harrington Park. Enquire now and make this stunning property your new home. Features include:- 4 good sized bedrooms, with built in wardrobes- The master bedroom offers a parents retreat including a bathroom, walk in wardrobe, balcony access and more- Formal lounge and dining area to the front of the home- Home office- Large family room off the kitchen and separate rumpus room- Upstairs living area- Study downstairs- Ducted air conditioning and alarm system- Double garage with internal access- Undercover entertaining area overlooking landscaped gardens and in built BBQ- 576m2 block This property is located close to Harrington Park Plaza, Harrington Park Lake, Narellan Town Centre, less than 18km away from Badgery's Creek Airport development, Harrington Park Public School, Child care centres, M5 access, Extensive parklands and recreational spaces, Walking tracks and more. This area is accentuated by its picturesque tree filled streets and reputable lifestyle. PA Real Estate and associated companies take every reasonable step to ensure the information communicated is accurate. However, we encourage all parties to conduct their own enquiries.