

**17 Old Warburton Highway, Seville East, Vic 3139**



**Sold House**

Wednesday, 13 September 2023

17 Old Warburton Highway, Seville East, Vic 3139

**Bedrooms: 3**

**Bathrooms: 1**

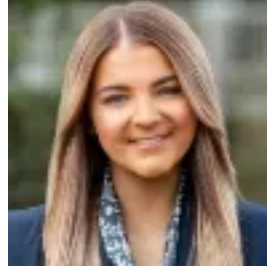
**Parkings: 2**

**Area: 836 m2**

**Type: House**



Chris Watson  
0398798827



Olivia Mackie  
0398798827

**\$620,000**

**THE PROPERTY** Ideally situated in a serene and peaceful neighbourhood, this beautiful family home places you amongst the treetops and offers spacious interiors and endless entertaining for growing families. On entry, the elevated full-length verandah showcases the stunning mountainous views. Inside, the large living room welcomes you an abundance of natural light continuing with the amazing vista outlook. Passionate cooks are certain to enjoy the well-appointed kitchen, fitted with premium electric cooking appliances and a wealth of storage solutions. A well-configured floorplan ensures separation from communal areas to all three generously sized bedrooms, two feature built-in robe storage as all surround a stylish main bathroom with a shower, bath, vanity, and a separate toilet. Glass sliding doors open to reveal a sun-splashed covered alfresco, perfect for endless entertaining with friends and family over the warmer months as the expansive leafy rear yard proves a spectacular space for kids and pets to enjoy. **THE FEATURES-** Beautiful three bedroom, one bathroom family home on 836sqm (approx.)- Serene and peaceful surrounds with panoramic valley views- Light-filled living zone with split system AC- Well-appointed kitchen with electric cooktop and oven, tiled splashbacks, and ample storage- Three generous bedrooms with 2 featuring built-in robe storage- Lavish main bathroom with shower, bath, vanity and separate toilet- Generous laundry with linen press storage- Covered alfresco for entertaining friends and family- Double carport with sealed driveway- Expansive rear yard with lush lawn and gardens **THE LOCATION** Adding to the home's serene and peaceful surrounds is a premiere positioning, located only moments away from Wattle Creek, Seville Primary School, Woori Yallock Primary School, local Woolworths, restaurants and cafes and a nearby bus stop.