

**17 Spring Street, Belmont, Vic 3216**



**House For Sale**

Thursday, 25 January 2024

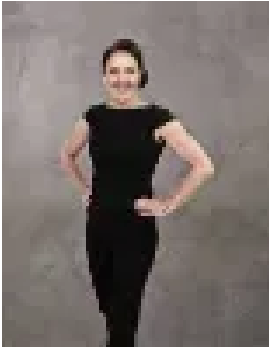
**17 Spring Street, Belmont, Vic 3216**

**Bedrooms: 6**

**Bathrooms: 3**

**Parkings: 2**

**Type: House**



Michelle Winckle  
0352411488



Sophie Spowart  
0478957905

**\$960,000 - \$1,050,000**

Discover the epitome of comfort and versatility in this stunning 6-bedroom home with 4 living spaces, 3 bathrooms, and 2 kitchens. This split-level residence opens its doors to endless opportunities, making it the perfect haven for families or a savvy investment for Airbnb or rooming house accommodation. The first level of the home comprises of 4 bedrooms the master includes an ensuite. The spacious living, dining, and kitchen is the perfect space to entertain with easy access to the undercover alfresco area with views across the city. Downstairs comprises of 2 large bedrooms and two living areas complete with a kitchen and access to an undercover entertaining space, this split-level home has a myriad of opportunities on offer. With all the hard work done, this spacious and light-filled residence has it all! Complete with Solar panels installed 6.4kw, Fronius 5 inverter, External Security/Weather shutters upstairs, Ducted vacuum, double glazed windows upstairs and auto watering system on the front gardens. Effortless commuting is at your doorstep. Just one short block away, you have easy access to public transport and A quick 4-minute drive gets you to the South Geelong Train Station, ensuring your daily commute is a breeze. Within walking distance to the Barwon River perfect for cycling, running, and dog walking, and only a short stroll to High Street shopping strip with an abundance of cafes, shops, and local amenities. Situated only a short 5 minute approx. to the Geelong CBD, waterfront, local hospitals and shopping centres. Deakin and the Epworth Hospital are only within a short drive, this prime location has it all! Explore the beauty of the Bellarine Peninsula and the Surf Coast with convenient access to the highway.\*All information about the property has been provided to Hayeswinckle by third parties. Hayeswinckle has not verified the information and does not warrant its accuracy or completeness. Parties should make and rely on their own enquiries in relation to this property.