

# 17 St Georges Crescent, Croydon, Vic 3136



## Sold House

Thursday, 12 October 2023

17 St Georges Crescent, Croydon, Vic 3136

Bedrooms: 3

Bathrooms: 2

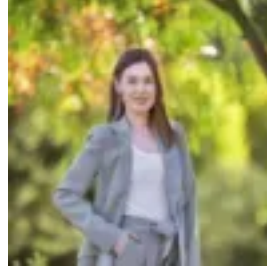
Parkings: 4

Area: 1034 m2

Type: House



Daniel Broadbent  
0398706211



Erin McDougall  
0398706211

## Contact agent

Enticed by a peaceful leafy crescent, this gorgeous sun soaked home offers alluring architectural flair and a layout that integrates superbly with the generous outdoor spaces. A discreet façade allows families the privacy they seek, and refreshing interiors deliver a light, clean palette and a home that is functional but equally engaging, with rear-garden views of the Dandenong Ranges. Timber-inspired floors and appealing neutral colours enhance generous living and dining areas, characterised by floor length windows, a stunning coffered ceiling and cosy gas fireplace. A rejuvenated kitchen offers stainless steel Delonghi electric oven/cooktop and a Bosch dishwasher. An extensive outdoor entertaining area with merbau decking and a contained undercover dining space with retractable shade/wind blind is the perfect summer playroom for kids. Extending off the other side of the home is a sun warmed paved pergola that flows around to an alfresco firepit space for relaxing on weekends or chilly nights. Generous lawn offers a great open space for kids and dogs as well as a bird's eye view of Mt Dandenong in all its glorious changing skies. Mulched gardens blend with fruit trees to complete the tranquil setting.

Encompassing three bedrooms, two with built-in robes sharing a spotless family bathroom with bath, shower and vanity plus a stylish zoned master suite primed for adults who really enjoy their own space. Fitted with a walk-in robe and large ensuite, plus an external door to a quiet garden setting. Additionally, a study on entry is ideal for studying and working at home. Further features: no steps in the home's interiors, split system heating/cooling, plantation shutters and block-out curtains, laundry with external door, linen press, two garden sheds, fruit trees, and a large double carport plus extra driveway park, in addition to a designated caravan/trailer/boat storage bay. Strong appeal for families, downsizers seeking a private home after living on an acre and professional couples hoping for a tree change. Around the corner from Ruskin Park Primary, preschools and childcare centres. Close to Swinburne TAFE, Luther College, Yarra Valley Grammar and Tintern Grammar. Handy to Croydon Main Street shops/cafes, Croydon Central supermarkets and eateries, and Eastland Shopping Centre. Minutes to Croydon and Town Parks or Croydon Memorial Pool and Aquahub for a swim/workout. Enjoy extra leisure activities, trails and picnics at Dorset Recreation Reserve or nearby Dorset Public Golf Course plus activities, a café and playground at Wyreena Community Arts Centre. An easy drive to Mt Dandenong Ranges and the Yarra Valley winery region. Walk to Croydon Station, good access to Eastlink for city/coastal commuting.