

**17 Tomman Way, Schofields, NSW 2762**

**Sold House**

Friday, 1 September 2023

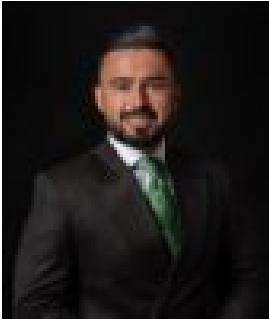
17 Tomman Way, Schofields, NSW 2762

**Bedrooms: 4**

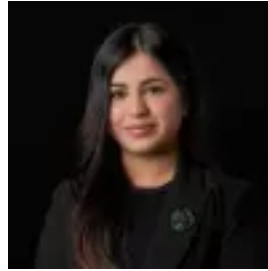
**Bathrooms: 3**

**Parkings: 2**

**Type: House**



Amit Kumar  
0288964336



Siya Sachdeva  
0288964336

**\$1,482,000**

Situated in a highly sought-after pocket of Schofields. Presenting modern elegance in a prime location, within proximity to Tallawong Metro Station, Schofields Train Station, local schools and parks and the Rouse Hill Village Centre, this home provides a contemporary standard of living for the growing family. With a versatile floorplan, this family home offers an open plan kitchen, living and dining area creating a seamless flow between spaces boasting out to the outdoor alfresco with a second kitchen featuring a gas cooktop and 900mm oven, perfect for entertaining all your families and friends. Elevate your cooking experience with this immaculate kitchen, offering high-end inclusions and quality appliances such as gas cooktop, 60cm oven, dishwasher, ample storage space, walk-in pantry and an island benchtop. The accommodation consists of four generously sized bedrooms, all with their own built-in robes with the master bedroom showcasing a walk-in wardrobe and luxury-style ensuite. Features you will love:- LED downlight throughout the home- Ceiling fans and ducted air conditioning - Secured double lockup garage - The main bathroom completed with marble tiles - Study area

Location Highlights:- 4-5 minutes drive to Schofields Train Station and Tallawong Train Station- 5 minutes drive to Schofields Village - 12 minutes walk to Galungara Public School - 10 minutes drive to Rouse Hill Shopping Centre- Minutes walk to the upcoming park

Disclaimer: All information contained herein is obtained from property owners or third-party sources which we believe are reliable. We have no reason to doubt its accuracy, however, we cannot guarantee it. All interested person/s should rely on their own enquiries.