

# 17 Two Bays Drive, St Leonards, Vic 3223

## Residential Land For Sale

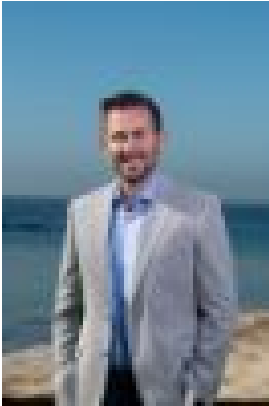
Friday, 3 May 2024



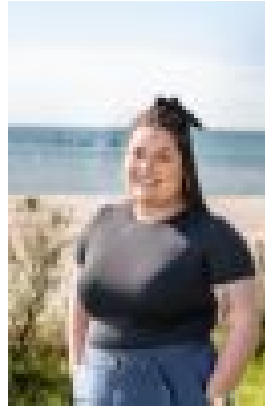
17 Two Bays Drive, St Leonards, Vic 3223

Area: 720 m2

Type: Residential Land



Lachlan Campbell  
0352571778



Bree Armstrong  
0474078813

**\$690,000**

Dare to live your dream lifestyle and purchase this fantastic allotment located within the 'original' Seachange Estate. Boasting a 18m frontage and 40m approx. depth, blocks this large are rarely seen in modern times and highly sought-after, so be sure to act fast. Located less than 500m walk to the sparkling beaches of Port Phillip Bay and a short drive to the idyllic township of St Leonards this block offers the ideal location for your beach home or permanent residence by the coast. This stellar allotment is titled and ready to build. A double storey build could potentially take in views of the picturesque bay across existing houses and with 720m<sup>2</sup> (approx.) of build space you will have plenty of room to move and create the ideal home with side access for boats and caravans. Vacant allotments situated in the early stages of Seachange Estate are becoming rare so be sure to make the call today.