

17 Weemala Avenue, Kirrawee, NSW 2232



Sold House

Friday, 1 March 2024

17 Weemala Avenue, Kirrawee, NSW 2232

Bedrooms: 4

Bathrooms: 1

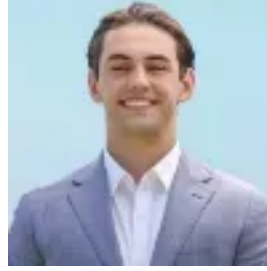
Parkings: 1

Area: 581 m2

Type: House



Adam Crawley
0295449595



Declan Fallah
0295449595

\$1,430,000

Nestled in a peaceful, family-friendly locale, this property offers the perfect canvas for your dream home. With the option to knock down and rebuild (STCA), or renovate the existing 4-bedroom house to your own taste, the possibilities are boundless. The generous north-west facing backyard, complete with a paved section and private greenery, provides an ideal space for outdoor entertaining. Inside, the current property offers a front porch that leads to the lounge/dining area and connects to the wooden kitchen. Three spacious bedrooms are situated towards the front, while a fourth, equipped with a kitchenette and second living, offers versatility as a teenager's retreat. A separate bath/shower complements the bathroom, with a convenient lock-up garage positioned at the rear of the property. Showcasing a wide 17m street frontage and a spacious site, this property promises endless potential for development (STCA), only limited by your imagination. Positioned just moments from local amenities, schools, and public transport, do not miss the opportunity to create something truly special in this serene neighbourhood. - Fantastic entry-level property to get into the market - Exceptional site of 581.7sqm with a 17.06m frontage approx and gentle slope to the street - Renovate the existing original family home or rebuild your dream home (STCA) - Central location, an easy walk to shops, stations, schools and all amenities. When looking at properties it's important to have confidence in how much you can borrow. As Ray White are partnered with Loan Market they can make this simple and easy for you. Should you wish to know your borrowing powers simply go to www.loanmarket.com.au/brokers/jason-wylie now and our Loan Market broker will be in touch.