

# 17 Yippenvale Circuit, Wauchope, NSW 2446

## Sold House

Friday, 20 October 2023

17 Yippenvale Circuit, Wauchope, NSW 2446

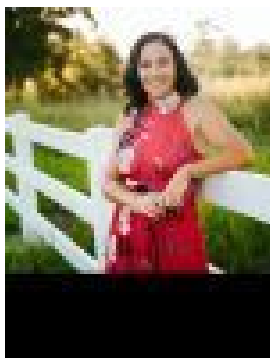
Bedrooms: 4

Bathrooms: 2

Parkings: 3

Area: 1016 m2

Type: House



Julie Slater

**\$855,000**

This substantial four bedroom brick residence is flooded with natural light and boasts cathedral ceilings in the main family zone promoting a sense of space throughout the home. Set on a generous 1016m<sup>2</sup> the home features extensive flowing spaces that includes two living zones that comprise a main lounge room and media room and a tiled open plan kitchen-dining zone. The kitchen has a large pantry and overlooks the private gardens. The spacious master bedroom benefits from an ensuite, walk-in wardrobe and is located at the front of the home receiving plenty of natural light from the north-facing orientation. The three other bedrooms are serviced by a main bathroom with shower and bath as well as a separate toilet. There is zoned and ducted aircon and heating to keep the home's interior pleasant year-round and easy-care private gardens to enjoy in the warmer months. The home has been re-carpeted throughout and as an added bonus includes a large single bay colourbond shed with power on a concrete slab which is ideal for extra storage and/or as a workshop. Buyers looking for a large property in a premium location will enjoy the benefits of this offering, presenting in excellent condition and ready to be enjoyed. Features: Colourbond shed on concrete slab, 2 x water tanks, playground, garden shed, zoned ducted air conditioning system, new carpet, cathedral ceilings. Please contact the exclusive agent Julie Slater on 0499 994 241 for a private viewing and for more information. Property Code: 614