

170 Kars Street, Frankston South, Vic 3199

 Real Estate

House For Sale

Friday, 17 May 2024

170 Kars Street, Frankston South, Vic 3199

Bedrooms: 4

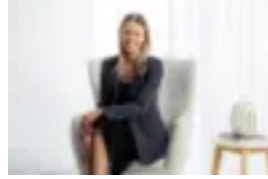
Bathrooms: 2

Parkings: 2

Type: House



Rob Ferguson
0398229999



Amy Gowan
0398229999

\$970,000 - \$1,060,000

Privileged by its coveted position within the Frankston High & Derinya Primary School zones, this spacious, light-filled four-bedroom contemporary home is idyllically located at the end of a tranquil cul-de-sac bordering Sweetwater Creek Nature reserve within a short stroll to Oliver's Hill beach and Norman Ave shops/cafés. Privately set on a separate 308 sqm (approx.) low maintenance block, with no Owners Corp fees, the well-appointed double-storey home is designed to optimise its elevated position on the edge of this prized coastal bushland pocket showcasing treetop views and sunset vistas from a broad upper-level entertaining balcony. The master bedroom suite is situated on the lower level, with living areas, bedrooms, and bathrooms across both storeys, the layout is perfect for effortless living and relaxed entertaining. The main open plan living/meals area receives plenty of northerly sun and is lined by glass sliding doors that open to an expansive alfresco deck, while the gleaming central kitchen is equipped with quality appliances including an AEG oven and dishwasher, and a Fisher & Paykel cooktop. Adding to the convenient liveability, the laundry/mud room which adjoins the kitchen has internal access to the double remote garage. Additional features include double roller screen/block-out blinds, LED downlights, split system heating/cooling, gas ducted heating, energy efficient instantaneous hot water and fully-fenced private rear lawn and landscaped gardens. From the front of the home, step onto walking tracks that lead to the sandy shores of beautiful beaches and popular Norman Ave shops/cafés. Zoned for Derinya Primary School and Frankston High School, the home is also close to Woodleigh Minimbah Campus, Peninsula Grammar, Monash University, Chisholm TAFE, sports grounds and leisure amenities, with easy access to Frankston CBD, Mt Eliza Village, Bus stops, Train station, and the Mornington Peninsula Freeway.