

171 Hargrave Street, Paddington, NSW 2021

PPD REAL ESTATE

House For Sale

Monday, 3 June 2024

171 Hargrave Street, Paddington, NSW 2021

Bedrooms: 2

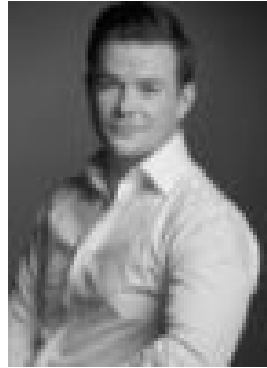
Bathrooms: 1

Parkings: 1

Type: House



Alexander Phillips
0283551117



Gavin Lewis
0405563115

Buyers Guide \$2,500,000

Classic Paddington charm at its best, this newly refurbished terrace offers an inviting blend of Victorian elegance and modern comfort at the Woollahra end of Hargrave Street. A fresh contemporary revamp allows the period feature to shine with a pastel pink front door and encaustic-tiled verandah inspired by the iconic Beverly Hills Hotel making a lasting first impression. Spread over two levels and featuring rear access via Windsor Lane to secure undercover parking, the north-facing terrace is lovely and light with a traditional filigree facade and sunny iron lace balcony off the main bedroom. A spacious layout features a choice of living areas and large contemporary kitchen with potential to extend the upper level or convert the attic space in line with neighbouring homes. Available for the first time in 26 years, the two-bedroom home is just 400m up to Queen Street's cosmopolitan cafe and social scene or down to Trumper Park and local institutions including Flat White Cafe and the Lord Dudley.

- * Beverly Hills hotel pink front door
- * A delicate palette of pastel hues
- * Corbelled arch hall, hardwood floors
- * Newly refreshed, ready to move in
- * 2 large bedrooms with built-in robes
- * Main with a fireplace and sunny balcony
- * Traditional living and dining rooms
- * Original fireplaces, lovely high ceilings
- * Refreshed Caesarstone gas kitchen
- * Casual living with an in/outdoor flow
- * Wraparound travertine courtyard
- * Stone mosaic tiles
- * Contemporary bathroom, bath and shower
- * Powder room, separate internal laundry
- * Reverse cycle air, gas heating bayonet
- * Woollahra Public School catchment area
- * Walk to Woollahra village and Five Ways
- * 350m to the Lord Dudley and Flat White
- * Easy access to the city and beaches