

172 High Road, Waterford, Qld 4133



House For Sale

Friday, 5 April 2024

172 High Road, Waterford, Qld 4133

Bedrooms: 4

Bathrooms: 2

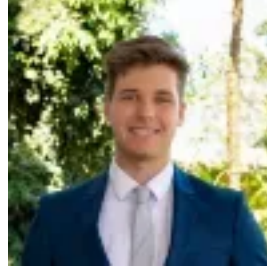
Parkings: 2

Area: 643 m2

Type: House



SELENE BRUYNZEELS
0738076334



ADAM JONES
0738076334

CONTACT AGENT

This spacious family home is located in the sought-after neighbourhood of Waterford and features 4 bedrooms, 2 bathrooms, an open-plan kitchen / living area, an additional living/media room, 2 air-conditioners and a double lock-up garage. The beautifully-presented backyard and covered patio provide a great outdoor space that will be attractive to first-homebuyers and growing families looking to call this one home, and to investors seeking a property that will suit a wide-range of potential tenants. Conveniently located across from Canterbury College, you can rest assured that your children will have access to one of Logan's finest schools. Positioned near local parks, and shopping centres, this property presents a versatile opportunity to establish a comfortable residence or a promising investment. Keep reading to discover what 172 High Road, Waterford has to offer!

MAIN FEATURES: • 4 x Bedrooms • 2 x Bathrooms • 2 x Separate Living Areas • 2 x Car Garage • 643m² Block • Vacant and ready to move into!

THE FINER DETAILS: • Solar Panels • Security cameras • Downlights and a fresh coat of paint throughout • New appliances - Cooktop and Oven • Beautifully-presented gardens • 4-person Spa (Open to discussion for keeping/removal)

INSIDE FEATURES: • The master bedroom boasts ample space and includes an ensuite bathroom, walk-in wardrobe, and air-conditioning. • Each of the spacious secondary bedrooms is equipped with ceiling fans and built-in wardrobes featuring mirrored doors. • Stay comfortable throughout the home with fans installed in all bedrooms and living areas. • Flooded with natural light from large windows, the open-plan kitchen, dining, and living area ensures year-round comfort with its air-conditioning. • Ideal for the home chef enthusiasts, the spacious kitchen offers a large pantry and ample benchtop space, making it the heart of the home. • Utilise the light-filled second living area as a media room, formal living space, or a private retreat for either relaxation or gaming. • The double lock-up garage features high ceilings, providing additional storage options. • Enjoy the convenience of a spacious main bathroom with a separate toilet.

OUTSIDE FEATURES: • Impressive and well-maintained street appeal. • LARGE covered patio perfect for hosting gatherings. • The 4-person spa offers relaxation and leisure opportunities. • Fully-fenced, good-sized yard with grass, ideal for both kids and pets. • Surrounded by beautiful gardens with a practical vegetable patch. • 3m x 3m garden shed. • Walking side access on both sides of the property, and access via garage to backyard. • Rain-water tank to cut your water bills.

LOCATIONS & SCHOOLS NEARBY: Canterbury College - 10m
Woodlands Early Education Centre - 250m
Bethania Lutheran Primary School - 2.3km
Trinity College - 6.4km
Boulevard Park - 750m
Holmview Central Shopping Centre - 1.6km
Bunnings Bethania - 1.6km

RENTAL APPRAISAL: Rent per week: \$600 - \$650

Don't miss out on the opportunity to claim this wonderful family home as your own. Contact Selene or Adam today for more information, or come along to our next open home!

-Disclaimer: All information contained herewith, including but not limited to the general property description, price and the address, is provided to Ray White Beenleigh by third parties. We have obtained this information from sources we believe to be reliable; however, we cannot guarantee its accuracy. The information contained herewith should not be relied upon and you should make your own enquiries and seek advice in respect of this property or any property on this website.