

172 Sutherland Street, Paddington, NSW 2021



Terrace For Sale

Friday, 2 February 2024

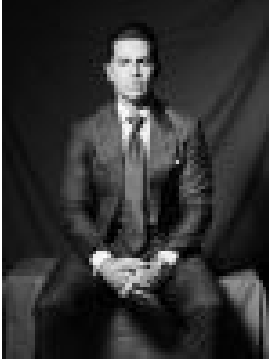
172 Sutherland Street, Paddington, NSW 2021

Bedrooms: 3

Bathrooms: 2

Parkings: 1

Type: Terrace



Maclay Longhurst
0283556783



Emily Davidson
0437492378

Buyers guide \$2,500,000

Sweeping treetop views over Trumper Park, north rear aspect and a secure garage are outstanding features of this classic terrace in a peaceful pocket at the Woollahra end of a prized address just 500m to Queen Street village and an easy walk to Edgecliff train station. Capturing sunshine and north-easterly breezes in its elevated setting on a dual-access block with rear frontage to Sutherland Avenue, this unpolished gem presents exciting scope for modern transformation in a sought-after position just around the corner from Flat White café. * Living area with fireplace, dining area* Family area opens onto sunny terrace* DA approved architectural plans * Galley-style kitchen, Miele dishwasher* Top floor parent's retreat with balcony* Main bed with b/ins, ensuite, balcony* 2nd dbl bedroom with adjacent study * 2 bathrooms, laundry, storage/cellar* Attic storage, scope to modernise * Auto-door garage, north rear aspect* Dual street frontages, premier position