

173/61 Supple Road, Waterloo Corner, SA 5110



House For Sale

Wednesday, 6 December 2023

173/61 Supple Road, Waterloo Corner, SA 5110

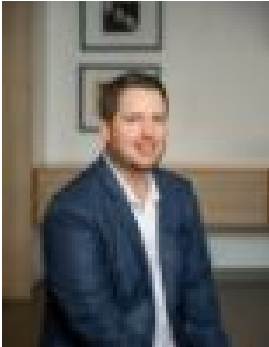
Bedrooms: 3

Bathrooms: 2

Parkings: 2

Area: 211 m2

Type: House



Steve Spurling

0421571682

\$399,000 - \$429,000

Nestled in the Palms Residential Park for those aged over 50 it's a pleasure to bring this immaculate home to market where the new owners can just move in and enjoy from day 1. The home is packed full of features that include but are not limited to:- 3 Spacious bedrooms.- Master bedroom features his and her robes with a surprise ensuite. (a rare find in the Palms)- Bedroom 3/Study has built in cupboards and desk.- 2 Separate large living zones allowing you plenty of room to spread out and entertain.- Kitchen with ample cupboard and bench space, dishwasher and electric cooking.- Ducted Reverse cycle air conditioning to keep you comfortable year round.- Front blinds and rear double glazing help with efficiency.- Solar power and solar hot water easing the pain of soaring power prices.- Double length Carport with auto panel lift door.- Undercover entertaining at the rear and full length deck at the front of the home. All of this and more located in the Palms Residential Park. The Palms Residential Park is you're affordable over 50's residential village. With homes for the budget-minded and for those who appreciate real value without compromising quality, you will be delighted with what The Palms offers. Here you have the freedom to personalize and customize your home to your tastes. The Palms is a residential village and with extensive recreational facilities, there's "something for everyone" Nestled on the outskirts of Virginia, The Palms has developed a beautiful secure, peaceful environment infused with a lively community spirit. For more information on this beautiful home, The Palms Residential Park or for a Private inspection of the homes available and tour of the Palms give Steve a Call today. RLA 232366