

1746/9 Maple Tree Road, Westmead, NSW 2145



## Apartment For Rent

Saturday, 11 May 2024

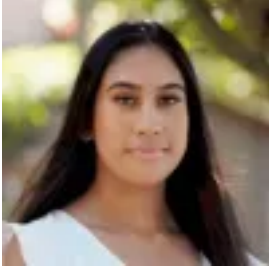
1746/9 Maple Tree Road, Westmead, NSW 2145

**Bedrooms: 2**

**Bathrooms: 2**

**Parkings: 1**

**Type: Apartment**



Zarin Hossain  
1300858221



Nevena Petrovic  
1300858221

**\$750 per week**

Here is your opportunity to reside in one of the newest developments. The Highline offers unrivalled luxury and ultra convenience. The place in Sydney's west, offering an envious lifestyle of highest quality. Conveniently located within minutes to main arterial roads and highways and within walking distance to the Westmead health precinct. • Brand new condition • Timber flooring and carpeted bedrooms with built in wardrobes • Generous two apartments in the heart of Westmead • Luxury finishes and European appliances • Stunning roof top garden, pool and BBQs for entertaining family and friends • Secure parking and storage • 300m to Westmead station and 3 minutes to Parramatta station and 30 minutes to the CBD by train • Close to shopping and schools • 350m from the newly refurbished Westmead hospital (Westmead is home to the Southern Hemisphere's largest health precinct), brand-new Westmead Innovation Centre, 15,000 highly skilled workers including doctors and specialists • 350m from North West T Way • 600m nearby Parramatta Park by Parramatta River spans a huge 85 hectares • New light rail to be completed in 2023 which will reduce travel time to the Sydney CBD to 20 minutes • 5 highly ranked secondary schools within a 1km radius of Highline • Nearby University of Sydney and Western Sydney University campuses\*\*\*Please note some photos used in this advertisement are general images of the development and may not be indicative of the actual apartment.\*\*\*