

# 17512/177-219 Mitchell Road, Erskineville, NSW 2043



## Apartment For Sale

Wednesday, 12 June 2024

17512/177-219 Mitchell Road, Erskineville, NSW 2043

Bedrooms: 1

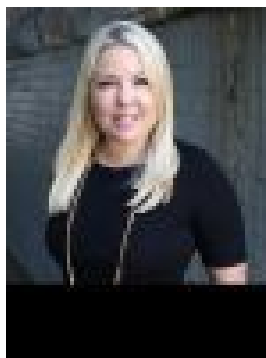
Bathrooms: 1

Area: 65 m2

Type: Apartment



Michael McCaffery  
0499105624



Melissah McCaffery J P  
0408601495

## Auction

Situated in the sought-after landmark 'Sydney Park Village' is this bright & spacious internal facing apartment featuring an open plan layout w/ views over the landscaped gardens, swimming pools and tennis courts. Immerse yourself in an effortless urban lifestyle, perfect for the savvy investor or couple that demands quality without compromise. Double brick & quality building Floor to ceiling glass sliding doors enabling an abundance of natural light Spacious open plan lounge & dining area Large bedroom w/ walk in robe & direct balcony access Designer gas kitchen w/ dishwasher & breakfast bar Stylish bathroom w/ tub & internal laundry w/ dryer Full width entertainers' balcony w/ leafy outlook & complex views Intercom access, resort style facilities w/ 24 hour security on-site Strata levies approx. \$1480/quarter Leased @ \$650/week until 20/1/2025 Sitting on the fringe of Sydney's inner west and inner city, its popular location is 5km from the CBD, 5 minute walk to St Peters station & 10 minute walk to Erskineville station. Highly prized for its relaxed yet vibrant community feel and only moments to the enduring pub culture and buzzing café scene, Sydney Park Village is arguably one of the most sought after resort style buildings in Sydney. Offering incomparable facilities including 24 hour security, 60 visitor car spaces, outdoor pools, tennis courts, upgraded gymnasium, indoor heated lap pool, onsite café, onsite building management, beautician & more – plunge into this urban sanctuary.