

17A Park Street, Pascoe Vale, Vic 3044



Sold Townhouse

Monday, 30 October 2023

17A Park Street, Pascoe Vale, Vic 3044

Bedrooms: 4

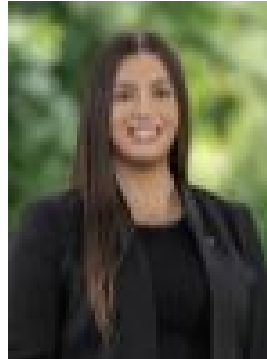
Bathrooms: 3

Parkings: 2

Type: Townhouse



Chauntel Considine
0393792000



Alicia Vavassori
0393792000

\$1,410,000

With its first-class features, multiple living zones and flawless presentation throughout, this stunning new home delivers a perfect modern family lifestyle in an enviably convenient Pascoe Vale neighbourhood. Designed and delivered to exceed all expectations, the home's vogue interior showcases a large master bedroom with fitted WIR and luxurious double-vanity ensuite, as well as three additional bedrooms (all with fitted BIRs) and two extra bathrooms – one on each level. Further enhancing its family appeal is the inclusion of a front lounge (or home office), large rumpus (upstairs) and expansive open-plan living/dining area adjoined by a superb stone-bench kitchen with mosaic-tiled splashback, Smeg 900mm cooking appliances and butler's pantry with second sink. Filled with natural light, this architectural showpiece also includes split-system heating/cooling throughout, wi-fi video intercom and CCTV cameras, stylish engineered timber floors, high square-set ceilings and double-glazed windows, motorised sheer blind with remote in the living room, as well as a family-sized laundry and excellent storage options. Double sliding doors reveal an alfresco entertaining area with ceiling fan and private back garden to enjoy, plus a remote-control garage with internal entry and additional driveway parking space. Walking distance to Pascoe Vale Station, local cafes and FoodWorks supermarket, it's also close to popular schools (zoned to Strathmore North PS and Strathmore SC), Esslemont Reserve and Moonee Ponds Creek Trail, as well as easy access to Citylink.