

# 18 & 18a Lyte Place, Prospect, NSW 2148



## House For Sale

Thursday, 13 June 2024

18 & 18a Lyte Place, Prospect, NSW 2148

Bedrooms: 6

Bathrooms: 3

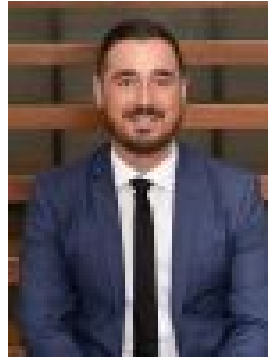
Parkings: 2

Area: 572 m2

Type: House



Mark Vella  
0296229999



Jayden Potten  
0296229999

## YOUNG & PRESTIGE DUAL YIELDING PROPERTY

Presenting a prime dual-occupancy home, only 4 years old, generating \$1220 weekly rent with outstanding tenants. This modern, fresh, and bright property features an open-plan design, high-end inclusions, and separate yards with private access. Nestled on a high-side block in a sought-after cul-de-sac, the home boasts a double garage and top-quality construction. Located in a family-friendly area with easy access to all amenities and the M4 motorway, it offers both comfort and convenience. An ideal addition to your investment portfolio, this gem should top your inspection list. Don't miss this unique opportunity!

The home offers:- 4 large bedrooms, built-in wardrobes, en-suite to main- Large kitchen with quality appliances- Oversized living areas - Double garage, generous yard with alfresco

The granny flat offers:- Separate entry and courtyard- Large internal design- 2 bedrooms with built-in wardrobes- Quality fixtures and fittings throughout