

18 Amber Circuit, Ripley, Qld 4306



House For Sale

Thursday, 13 June 2024

18 Amber Circuit, Ripley, Qld 4306

Bedrooms: 4

Bathrooms: 2

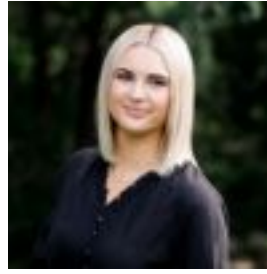
Parkings: 2

Area: 458 m2

Type: House



Ben Ramsey
0411428474



Taylah Sherrin
0457047720

Offers Over \$729,000

Welcome to your dream home in the heart of Ripley, one of South East Queensland's largest growth suburbs! This beautiful four-bedroom, two-bathroom house located in the 'Ripley Valley' Estate is perfect for families seeking comfort, convenience, and style. The home itself is nestled on a desirable corner block and offers an unparalleled sense of privacy with an expansive field of lush greenery right across the road. If the charming facade isn't enough for you, what's behind the front door will be! From the THREE LIVING SPACES to the upgraded luxe features such as ducted air-conditioning; waterfall stone benchtop in the kitchen and plantation shutters in the living spaces, this home will not disappoint! The kitchen serves as the true centrepiece and heart of this home, showcasing a luxurious waterfall stone benchtop that adds both elegance and practicality. The high-end features extend throughout the house, including ducted air conditioning for year-round comfort and plantation shutters in the living areas, combining style and functionality. Situated in 'Ripley Valley' Estate, this exceptional home blends modern amenities with timeless appeal, creating an ideal sanctuary for your family. With its prime location, outstanding features, and welcoming atmosphere, this property is designed to exceed your expectations. Don't miss the opportunity to make this stunning house your forever home. Contact Ben & Taylah today to schedule your inspection!

Key Features:- Four generously sized bedrooms with ducted air-conditioning, ceiling fans & built in robes- Master bedroom with walk-in robe, ceiling fan, ducted air-conditioning & modern ensuite- Main bathroom with modern accents, separate shower & bathtub- Large modern kitchen with gas cooking, luxe waterfall benchtop, ample storage and walk in pantry- Open plan living/dining space with glass sliding doors that open up onto the outdoor alfresco area for indoor/outdoor living- Separate media room at the front of the home - currently being utilized as an office- Kids retreat/play room or third living space!- Internal laundry room with ample bench space- Luxe plantation shutters in the living spaces & dining- Downlights throughout- Outdoor alfresco with upgraded decking plus a ceiling fan for those warmer summer days- Fully fenced & private CORNER block

Location:- 7 minutes to the Ripley Valley State School*- 6 minutes to the Ripley Valley State Secondary College*- 5 minutes to Ripley Town Centre (Coles, Bakery, Chemist, Gym, Medical Facilities, Cafes, Vet etc.)*- 14 minutes to Orion Shopping Centre Springfield*- 7 minutes to Centenary Highway*- 4 minutes to Cunningham Highway*- 40 minutes to Brisbane CBD*- 15 minutes to Ipswich CBD**approximately

This property is one not to be missed. If you would like more information on the property or wish to book a private inspection, please call Ben Ramsey on 0411 428 474 or Taylah Sherrin on 0457 047 720 today. We look forward to meeting you at one of our open homes! Chat to you soon.