

18 Bellevue Road, Bentleigh East, Vic 3165

buxton

House For Sale

Wednesday, 28 February 2024

18 Bellevue Road, Bentleigh East, Vic 3165

Bedrooms: 3

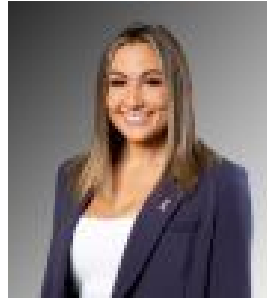
Bathrooms: 1

Parkings: 2

Type: House



Sam Maley
0395639933



Felicity Locandro
0395639933

\$1,300,000

Immediately inviting and wonderfully positioned close to shops, schools and transport, this enticing three-bedroom residence is ready to move in and enjoy or enhance with value-add renovations. Embraced by lush, landscaped gardens on a 588 sq m approx. block, the home invites you inside with a light-filled living room upon entry complete with gas log fireplace for optimum comfort. Flowing through to the open plan dining domain and kitchen, home chefs will appreciate the quality appliances, breakfast bar and walk-in pantry, while the laundry alongside offers direct access to the generous alfresco and pergola in the leafy backyard. Families will adore the expansive rumpus room at the rear of the home, a versatile space for relaxation, while three plush bedrooms (two with built-in robes) provide ample accommodation serviced by the chic main bathroom boasting shower, bath, vanity, and separate powder room. Extra features include refrigerated heating and cooling, 2x split system AC's, 1500L water tank, and original T&G hardwood floors under carpet. Exceptionally located for a modern lifestyle of convenience, with Centre Road shops and eateries just a short stroll away, Tucker Road Bentleigh Primary and Bentleigh Secondary College both within walking distance, you're also in the zone to East Bentleigh Primary and Southmoor Primary, plus an array of parkland close at hand and Patterson Station nearby. For further information on this upscale rear home contact Sam Maley at Buxton Bentleigh on 0433 971 116 or the Buxton Office on 9563 9933. ALL ENQUIRIES MUST INCLUDE A CONTACT NUMBER.