

18 Bluebird Lane, Reedy Creek, Qld 4227



House For Sale

Friday, 22 March 2024

18 Bluebird Lane, Reedy Creek, Qld 4227

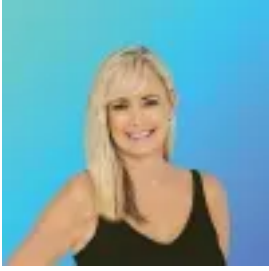
Bedrooms: 5

Bathrooms: 3

Parkings: 6

Area: 510 m2

Type: House



Tracy Tomars

0755930044

Expressions Of Interest

Nestled 'higher not further' above the coastline this stunning bushland estate frames amazing 180° ocean views from the Broadbeach skyline all the way down to Burleigh Heads. On offer is a luxurious escape from the rigours of city life where peak hour noise is the sound of birds nesting and koalas snoozing... but don't let the serenity fool you... your only minutes to the white sands and world famous surf breaks of Burleigh Beach. This vast 5 bedroom property showcases a premium dual living opportunity for extended families. Entering the property through double doors you're immediately drawn towards the large glass opening that frames magnificent views both night and day. A show-stopping bespoke kitchen is blessed with a suite of high-end inclusions including, 2 Westinghouse pyrolytic ovens, 5 burner gas cooktop, integrated microwave and stone waterfall bench tops. The accompanying butlers pantry includes sink, integrated dishwasher and an abundance of storage. There's a seamless transition from the kitchen to lounge and dining areas out to the huge outdoor alfresco terrace. The 2 master bedrooms with lux ensuites and 2 lounges both flow seamlessly on each level out to large covered alfresco decks with uninterrupted bush and ocean views - multiple vehicle/caravan/boat/jet ski parking options separate this from many other properties... but there's so much more... so I've set the scene for this idyllic property..... the rest is up to you ... so bring the children... heck, even bring the in-laws.... come take a look !

Features:

Entry Level

- Generous sized living and dining areas with seamless indoor-outdoor flow to alfresco entertaining with show-stopping views
- Entertainers kitchen with stone waterfall edged bench tops, quality Westinghouse appliances including two ovens, integrated microwave and corresponding accent pendant lighting.
- Butlers pantry with dishwasher, sink and preparation area with an abundance of storage
- Super sized master bedroom with plush carpet, walk in robe and lux floor-to-ceiling tiled ensuite, frameless shower and dual stone topped vanities - all with seamlessly access to the large outdoor alfresco terrace.
- Large laundry with bespoke feature tiles. Direct access outside - internal and external clothes line options available
- Home office
- Powder room
- Internal access from the double garage + off street parking for 2 additional vehicles

Upper Level

- Feature hardwood stairwell leads to the upper level
- A 2nd generous sized master bedroom embraces uninterrupted views from the large alfresco terrace. Walk in robe and ensuite with freestanding bath, lux floor-to-ceiling tiles, shower and dual stone topped vanities.
- Guest bedrooms 3,4 & 5 with built-in robes. Expansive 180° views and alfresco terrace access from bedroom 3
- Large living and dining areas with seamless indoor-outdoor flow to alfresco entertaining
- Galley style kitchen with stone bench tops.
- Bespoke designer main bathroom
- Sizeable walk in storage area

Lower Level

- Generous sized open work area with the ability to develop further, can accommodate vehicles, boat or jet skis etc
- Opportunity to build direct access from the level above
- Council approval for the addition of a swimming pool.

Location: Reedy Creek is a highly regarded family-friendly haven and offers easy access to parklands, walking trails and prestigious local schools along with several popular childcare choices. 5min to M1 motorway and 20min to Gold Coast Airport. Reedy Creek Village is close by with larger-scale retail and leisure amenities at Robina Town Centre only 10min away.

Disclaimer: We have in preparing this information used our best endeavours to ensure that the information contained herein is true and accurate, but accept no responsibility and disclaim all liability in respect of any errors, omissions, inaccuracies or misstatements that may occur. Prospective purchasers should make their own enquiries to verify the information contained herein. * denotes approximate measurements.