

18 Bowden Street, Castlemaine, Vic 3450



House For Sale

Wednesday, 10 April 2024

18 Bowden Street, Castlemaine, Vic 3450

Bedrooms: 3

Bathrooms: 1

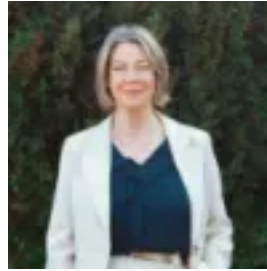
Parkings: 2

Area: 508 m2

Type: House



Jeremy Bottomley



Carole Lenander
0354721155

\$775,000

This sweet art deco home with loads of original features and quality updates is one of the most exciting properties to hit the Castlemaine market right now. Located just a few hundred metres from the train station, town centre and the Railway Hotel for fantastic pub fare, certainly enhances its appeal. The pretty weatherboard will have you at 'hello' with its crazy paved front porch, iron lacework and feature etched sash windows. There is a mature tree in the neat front yard just asking for the kids to climb it and a wide, sealed side driveway leading to the secure rear yard. Swing open the double front doors into the wide hallway, ready for your family photos. An original period pendant light fitting, the first of several, casts a warm glow here. The spacious master bedroom to the left has charm in spades, with curved built-in robes and a decorative ceiling rose. Two more bedrooms are robed and likewise roomy. The third with its own split system, located at the rear of the home, will be snapped up by a lucky teen or is a lovely private spot as a home office or for guests. The cosy lounge room flows through double etched doors to the dining room where the original fireplace homes a new wood heater. Note the curved, built in bookshelves here, another gorgeous feature. Ducted split system heating and cooling offers easy comfort. The kitchen is as cute as they come with timber cabinetry painted bottle green, feature tile work and an upright stove in the original hearth. The bathroom and even the laundry are likewise charming with classic black and white chequered lino floors. Entertain on the elevated deck, accessed via glass sliding doors by the dining room. The steps are the perfect spot to casually sit and chat over a coffee or glass of vino. Below, the healthy green lawn invites you to kick off your shoes and enjoy time with the kids and pets. The single garage with a rear workshop space has become a funky feature with its fresh timber panelled cladding. It has a concrete floor and power and could be your answer to a fourth bedroom? This special home will make your heart sing to return to each day. Be quick to inspect, it's sure to attract many admirers.