

**18 Dartford Street, Flemington, Vic 3031**



**Sold House**

Friday, 11 August 2023

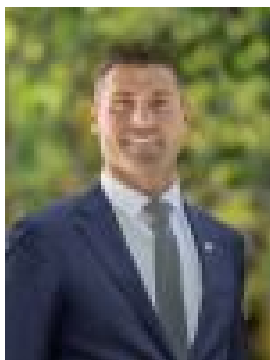
18 Dartford Street, Flemington, Vic 3031

**Bedrooms: 2**

**Bathrooms: 1**

**Area: 270 m2**

**Type: House**



Simon Mason  
0439617844

## Contact agent

Experience love at first sight with this enchanting two bedroom double brick period beauty set within a glorious garden and a quiet street lined with majestic plane trees. Resplendent in beautiful Art Deco details, the home is also spacious and inviting with a private front porch and generous entrance hall. Ornately decorated high ceilings, intricate plasterwork, cornicing and picture rails beautifully preserve the original integrity of this immaculately maintained gem. Comprising a charming living room with an original (fully functional) tapestry brick open fireplace, double hung sash windows and stunning plaster ceiling panels. Blessed with views of private gardens and striking trees providing sensational seasonal displays, is an open plan gas kitchen and meals area leading to a paved alfresco zone with a natural stone water feature. Includes generous bedrooms, a central bathroom, heater, rainwater tank and the convenience of two toilets. Enjoying a close-knit neighbourhood vibe, the home is steps from Canterbury Street Stables Community Centre and a delightful park. While plenty of dining, shopping and public transport options are found nearby along Racecourse Road, Mt Alexander Road and Pin Oak Crescent, with universities, hospitals and the CBD in close proximity.