

# 18 Days Crescent, Blackheath, NSW 2785



## House For Sale

Tuesday, 23 April 2024

18 Days Crescent, Blackheath, NSW 2785

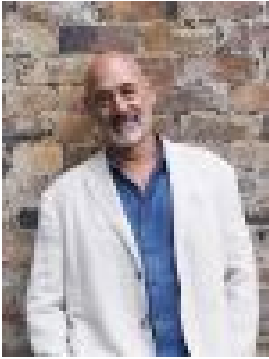
Bedrooms: 3

Bathrooms: 2

Parkings: 2

Area: 815 m2

Type: House



Lewis Thyer  
0430043806



Adele Colman  
0414876211

**\$990,000-\$1,080,000**

Days Crescent in the upper Blue mountains village of Blackheath is a tightly held pocket. And for good reason too, being a no through road traffic is light, the area is sheltered from those winter westerlies that can chill you to the bone and it has some of the best views available to the famous Grose Valley. 18 Days Crescent has been a family holiday home for over 20 years and in that time has been immaculately maintained and improved. Architect designed and built in the mid 1980's this brick home sits snugly on its 811M2 Block, there is also a single garage with direct access to the house which is great as no one wants to be drenched while unloading the shopping. The house itself is terrific and extremely versatile in layout, the ground floor has its own lounge area that has floor to ceiling timber windows to the impressive garden. (more on this later) This level also has a spacious bedroom with the same windows to the garden, a fresh bathroom and a laundry. Take the stairs to the upper level to find another living area, a kitchen and a spacious main bedroom plus a second smaller bedroom and the second bathroom. This level also has a large deck that flows from the living room and takes in the wonderfully intimate view to the cliffs of the Grose Valley. It is by no means the full cinematic view of some properties on the street but there is something quite lovely about this view, it is soft and has a real mountains vibe with the trees in the foreground. Imagine a glass of wine and a cheese platter, relaxing on that deck surrounded by birds of all shapes and colours while the sun hits those sandstone cliffs in a blaze of orange moving through to intense red as the sun sets in the west, just stunning. The gardens are impressive too as the current owners have been keen cool climate gardeners, the rear gardens have lovely paths that meander through a tasteful selection of camellias, azaleas and magnolias, in fact you name it and it will be there along with masses of bulbs. The front gardens remind me of gardens in Japan, all wavy soft cushions of azaleas, all packed together and they look terrific when in flower. Houses as move in ready and as charming come along in this location rarely, so come have a look and prepare to be bewitched! •❑Gas Central Heating•❑Slow Combustion Fireplace•❑Reverse Cycle Air•❑Filtered Valley Views