

18 Edgecliffe Esplanade, Seaforth, NSW 2092

BresicWhitney

House For Sale

Friday, 26 January 2024

18 Edgecliffe Esplanade, Seaforth, NSW 2092

Bedrooms: 5

Bathrooms: 2

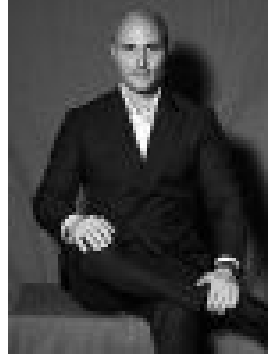
Parkings: 4

Area: 1505 m2

Type: House



Anna Chen
0482900888



Guido Scatizzi
0416752337

Buyers guide \$15,500,000

Auction Location: On site Experience the grandeur of 'Wonderview,' widely regarded as Seaforth's finest estate and one of Sydney's premier examples of a preserved early-1900s house. Originally constructed as home for a 'theatrical craftsman,' it sets a captivating scene throughout. While its Federation form predates the Art Deco period, the interiors are exceptionally lavish to evoke a Great Gatsby-like drama, with a series of indoor/outdoor settings designed for entertaining. The views of Middle Harbour take centre stage, looking out over The Spit and Clontarf Beach. The entertainment areas extend to the timber pavilion by the tennis court, a backstage haven complete with a wet bar and its own amenities, while the cupid fountains adorn the gardens to add a poetic touch. An opulent masterpiece that transcends time, the home has been beautifully maintained inline with its Heritage Listed status. And like a fine treasure, its true value and beauty will grow with age. On a rare level parcel, so unique for the area, it's close to city buses, marinas, Clontarf Beach, Manly Beach, and the CBD. Highlights* Dual street frontages w/ north rear aspect* North/south tennis court, heated salt pool* Level garden block, a unique find for area* Manicured hedges framing the lawned area* Postcard-worthy facade & sandstone upheld* High ornate ceilings, window seat setting* Family room & casual dining, gas log fire* Master dressing room, heated bath flooring* Wine cellar, internal access double garage* Heritage Listed perfection for modern life