

18 Gamble Crescent, Hawthorndene, SA 5051



Sold House

Monday, 4 September 2023

18 Gamble Crescent, Hawthorndene, SA 5051

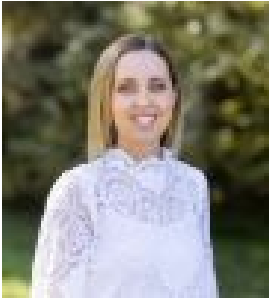
Bedrooms: 3

Bathrooms: 2

Parkings: 4

Area: 1287 m2

Type: House



Tara Witham

0421953033

Contact agent

Set within the highly sought-after Hawthorndene, this well presented 1978 built, three bedroom home boasts all the creature comforts you could hope for. Set on over 1280sqm of prized land and offering a tree-studded outlook, all just moments from the heart of convenient Blackwood. You'll feel like your home from the moment you step inside. This beautiful split level abode offers a stunning neutral palette throughout including rich coloured timber flooring, modernised raked ceilings, updated lighting throughout, an ambient combustion fire for those winter days plus multiple split systems for comfort throughout the warmer months and a flexible floorplan with that outstanding decked outdoor space enabling the family to spread their wings. What we love:- 3 bedrooms (two with robes)- Master suite with ensuite and robe- Centralised main bathroom- Fully functional kitchen overlooking meals space, decked entertaining and beyond- Near new kitchen with quality appliances and breakfast bar- Updated laundry- Split system heating and cooling plus combustion heating- Elevated decked entertaining space overlooking the treetops- Beautifully established and maintained gardens- Double carport- Under decking storage space- 1287sqm (approx.) allotment- Built in 1978 Perfectly placed on a quiet street, just moments from all the amenities Blackwood has to offer, as well as public transport, quality schooling, parks and walking trails and just a short commute to the likes of Mitcham Square shopping precinct, Scotch and Mercedes Colleges, the CBD and beyond. For more information please contact Sam Conlen or Tara Witham. All property information provided is to the best of our knowledge, however, details intended to be relied upon should be independently verified.