

18 Girton Crescent, Manifold Heights, Vic 3218



Sold House

Thursday, 29 February 2024

18 Girton Crescent, Manifold Heights, Vic 3218

Bedrooms: 5

Bathrooms: 2

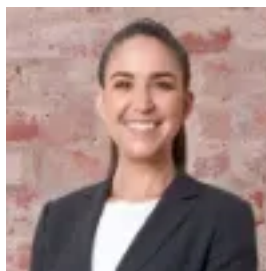
Parkings: 2

Area: 776 m2

Type: House



Carl Hammond
0407042152



Sally McKay
0432765831

\$1,515,000

Superbly positioned across from the local neighbourhood reserve in a leafy and highly sought-after pocket of Manifold Heights, this character weatherboard home on 776m² (approx.) accommodates five bedrooms over two levels for large family living. Step inside from the charming front verandah to discover soaring ceilings and original timber floorboards that grace the elegant interiors. Natural light filters through the open plan living/kitchen/dining zone, which offers a central space to come together as a family for meals and to unwind at the end of the day. It connects out onto a fabulous undercover alfresco deck, where you will love to gather friends for a weekend BBQ and watch the kids play on the lush grass in the north-facing backyard. The updated kitchen is beautifully appointed with stone benchtops, quality stainless steel appliances and a functional island bench. This premium location places you within walking distance of the Shannon Avenue shops for your daily shopping needs and just a short drive to the delights of Pakington Street. Walk to Newtown Primary School (zoned), while a selection of Geelong's finest schools are nearby. Approx. seven minute drive into the CBD and Geelong Train Station. Easy access to the Princes Freeway will suit Melbourne commuters. - Charming street appeal with picket fence and verandah - Smeg 900mm oven and 6-burner cooktop, Bosch dishwasher - Master bedroom with contemporary ensuite and built-in robes - Three sizable bedrooms downstairs with built-in robes - Upstairs homes fifth bedroom and a second living space - Modern updated bathroom features an oval bathtub - Spacious laundry with ample built-in storage - Ducted heating, split-system air conditioners, ceiling fans - Mature landscaping is surrounded by established trees - Double carport, garden shed, fully fenced