

# 18 Gish Court, Hadfield, Vic 3046



## House For Sale

Friday, 24 May 2024

18 Gish Court, Hadfield, Vic 3046

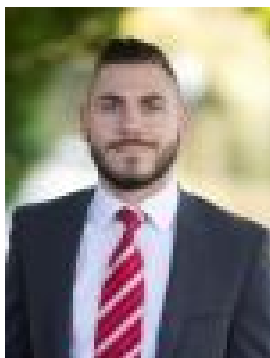
**Bedrooms: 3**

**Bathrooms: 1**

**Parkings: 5**

**Area: 587 m2**

**Type: House**



Daniel Imbesi  
0393060422

## **\$795,000 - \$815,000 Private Sale**

Nested peacefully in a quiet cul-de-sac location, this original three-bedroom brick veneer home has been well maintained and is a great option for home buyers and investors alike, with the potential to re-develop (STCA). Not to mention we are well located only moments away from East St shopping village, with bus services on East Street, Reddish Reserve nearby and plenty of local schools in the vicinity. **PROPERTY SPECIFICATIONS:** - Three large bedrooms, with built in robes and a ceiling fan in the master bedroom- Combined kitchen/meals zone offering an abundance of cupboard space, upright 900m gas oven and rangehood- Formal lounge drenched in sunlight with natural timber flooring, gas wall heater and ceiling fan- Central bathroom offering shower, bathtub, corner vanity and built in medicine cabinet- Full size laundry with single trough and external access to the rear yard- An additional room behind the garage which can be used as an additional bedroom or a home office- Outside, a large rear yard perfect for those looking to entertain or potentially extend in the future (STCA)- Plenty of off-street parking available with a double garage, a side driveway that provides roller door access to a carport which can be coupled as an outdoor entertainment area and a 2+ additional off street car spaces- Features include: Evaporative cooling, gas heating, window shutters, alarm system and solar panels **LOCATION BENEFITS:-** 300m (approx.) to East Street Shopping Village- 450m (approx.) to Reddish Reserve- 800m (approx.) to St Thomas More Primary School- Close proximity to Fawkner & Gowrie Train Stations- 527 Bus Stop on East Street taking you through to Northland Shopping Centre & Gowrie- Hadfield is located 12.5km's North of the CBD with terrific City Link, Ring Road, major arterial roads and airport access