

**18 Goodall Avenue, Croydon Park, SA 5008**



**Sold House**

Wednesday, 7 February 2024

18 Goodall Avenue, Croydon Park, SA 5008

**Bedrooms: 4**

**Bathrooms: 2**

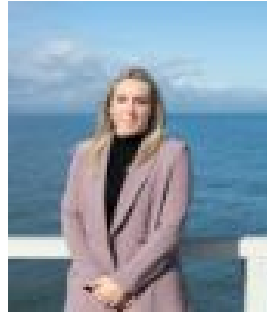
**Parkings: 2**

**Area: 319 m2**

**Type: House**



Mark Bowden  
0408441126



Tyra Hennessey  
0408077666

**\$800,000**

Welcome to 18 Goodall Ave, Croydon Park - an exceptional residence crafted by Metricon Homes, where modern sophistication meets timeless design. This three-year-old marvel showcases modern living at its finest, boasting an exquisite open-plan design that seamlessly merges functionality with style. Ideal for young families seeking both comfort and convenience, this home beckons with its thoughtfully designed spaces and an inviting alfresco area perfect for year round entertaining. Step into luxury and comfort in this meticulously designed 4-bedroom home, complete with a dedicated study for added convenience. The master suite features a spacious walk-in robe and a private ensuite, creating a retreat within your own home. The family bathroom, complemented by a separate WC, offers both functionality and style to accommodate the needs of a busy household. Every detail has been carefully considered, including a well-equipped laundry, ensuring practicality seamlessly intertwines with the elegance of this thoughtfully crafted residence. Elevate your culinary experience in this modern kitchen, where sleek design meets practical functionality. Adorned with stainless steel appliances that effortlessly combine style and efficiency, this culinary haven is a testament to contemporary living. The kitchen seamlessly integrates with the open-plan living and dining area, creating a dynamic and sociable space where cooking, dining, and entertaining converge. As you prepare meals, your gaze extends beyond the kitchen, overlooking the expansive open-plan layout that effortlessly flows into the alfresco entertaining area. This is not just a kitchen; it's the heart of a home designed for modern living and seamless indoor-outdoor enjoyment. Set on a low-maintenance allotment of approximately 320m<sup>2</sup>, this property offers the perfect blend of sophistication and practicality for those looking to embrace a relaxed yet stylish lifestyle. With a myriad of amenities at your fingertips, residents enjoy the luxury of proximity to prominent shopping center's, providing a retail therapy haven. Croydon Park ensures not only a tranquil suburban lifestyle but also swift access to the vibrant pulse of the city. Commuters benefit from seamless connectivity, with efficient transportation networks making the city's offerings easily accessible. This home is sure to appeal to many so get in quick to avoid disappointment!