

18 Hodge Street, Corinda, Qld 4075



Sold House

Wednesday, 4 October 2023

18 Hodge Street, Corinda, Qld 4075

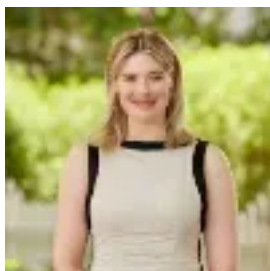
Bedrooms: 5

Bathrooms: 3

Parkings: 2

Area: 526 m2

Type: House



Lisette SchultsRand

0488518188

\$1,870,000

EXQUISITE HAMPTONS-STYLE FAMILY ENTERTAINER An inspired family entertainer, this stunning Hamptons-style showpiece will be your blissful suburban escape. Beautifully tailored and consciously conceived to harness natural light and ensure effortless indoor/outdoor flow, the intuitive floor plan hosts three living areas, five bedrooms, three bathrooms and a peaceful poolside sanctuary for entertaining. Exquisite stone benchtops, pendant lights, plantation shutters and sleek appointments adorn the interiors and exude timeless luxury. Extending off the entryway, an inviting living and dining area surrounds the stunning entertainer's kitchen, unveiling a feature waterfall island bench, premium appliances and a large butler's pantry. Relaxation and carefree living await on the covered alfresco area, perfect for year-round hosting. Flowing further to a beautiful sun deck, in-ground pool and soaring palm trees, this tropical paradise is destined for swimming, poolside drinks and lounging in the sunshine. Creating breakout space and separate living zones for families, the house features a media room downstairs and an upstairs rumpus opening to a rear balcony. Two of the five bedrooms enjoy balcony access, including the lavish master with a walk-in robe and ensuite. All three bathrooms are elegantly appointed, and the laundry includes walk-in linen storage. Additional features:- Four bedrooms and two bathrooms upstairs- Fifth bedroom/study and third bathroom downstairs- Kitchen includes a butler's pantry and walk-in pantry- Large laundry with walk-in linen storage- Double garage with internal access- Ducted air-conditioning and ceiling fans- Secure allotment with a remote driveway gate Presenting a peaceful suburban lifestyle, families will love the location with Corinda station, St Aidan's and St Joseph's Primary School just a moment's walk away. You can stroll 700m to the popular cafes, shops and restaurants within the Corinda lifestyle precinct, and recreation awaits at the nearby parks, reserves, golf course and Ambiwerra Tennis Centre. A magnificent home in a dream position - your inspection awaits. **DISCLAIMER:** Whilst all care has been taken to ensure that the information provided herein is correct, we do not take responsibility for any inaccuracies. Accordingly, we recommend that all interested parties should make their own enquiries and due diligence to verify the information. Any personal information provided to Cameron Crouch Property T/As Ray White Sherwood, will come under the terms set out in our Privacy Policy, which can be found here for your convenience: <https://www.raywhite.com/privacy>.